

ESCOP Budget and Legislative Committee (BLC): <http://escop.info/committee/blc/>

Call MINUTES for: 2/23/2021, 4 pm ET (Fourth Tuesday Monthly)

Committee Members:

<p>Chair: Glenda Humiston (WAAESD) Past Chair: Ernie Minton (NCRA)</p> <p>Delegates: Alton Thompson (ARD) Vernon Jones (ARD) Gary Pierzynski (NCRA) Shawn Donkin (NCRA) Puneet Srivistava (NERA) Anton Bekkerman (NERA) Steve Lommel (SAAESD) Saied Mostaghimi (SAAESD) John Talbott (WAAESD) Chris Pritsos (WAAESD)</p> <p>Executive Vice-Chair Jeff Jacobsen (NCRA ED) Chris Hamilton (NCRA AD; Recorder)</p>	<p>Liaisons: Jon Boren (ECOP) Katie Frazier (CARET) Doug Steele (APLU) Eddie Gouge (APLU) Caron Gala (APLU) Jim Richards (CGA) Hunt Shipman (CGA) Vernie Huber (CGA) Maggie Earle (CGA) Kim Whittet (NIFA) Paula Geiger (NIFA) Katherine Fink (NIFA) Glen Hoffsis (BVM) Laura Jolly (BHS)</p>
-------------------------------------------------------------------------------------------------------------------------------------------------------------------------------------------------------------------------------------------------------------------------------------------------------------------------------------------------------------------------------------------------------------------------------------------------------------------------------------------------	--------------------------------------------------------------------------------------------------------------------------------------------------------------------------------------------------------------------------------------------------------------------------------------------------------------------------------------------------------------

Participants: Vernon Jones, Gray Thompson, Alton Thompson, John Talbott, Marty Draper, Steve Lommel, Shawn Donkin, Gary Pierzynski, Chris Pritsos, Caron Gala, Laura Jolly, Vernie Huber, Glenda Humiston, Kate Fink, Hunt Shipman, Jim Richards, Doug Steele, Anton Bekkerman, Puneet Srivistava, Jon Boren, Jeff Jacobsen, Chris Hamilton (recorder)

Call Agenda/Notes:

1. Welcome and roll call – Done, see Participants list above.
2. Approval of 1/26 meeting minutes (http://escop.info/wp-content/uploads/2020/11/BLC_MIN_-20210126.pdf) – Approval motion from Steve Lommel, seconded by Chris Pritsos. Approved, with the correction of Vernon Jones’ name in the participant list (done, see updated file at http://escop.info/wp-content/uploads/2020/11/BLC_MIN_-20210126.pdf)
3. Approval of today’s agenda – Approved as distributed.
4. BAC Discussion – Glenda, Jeff
 - Unified Ask FY22 budget increase of 8% is up from 5% (about \$100M), with larger numbers for 1994s as agreed upon by 1994 presidents. Please see the [fy2022_final_february_2021](#) document sent to the group and included with the materials below the minutes.

- Additional funding for the ACOP Multicultural Scholars/Higher Ed program were also presented, which would allow their full \$40M ACOP authorization. These funds are not included as part of the Unified Ask.
5. Strategic Re-alignment Implementation (SRIC) discussion – Marty Draper, Gary Thompson
- Marty presented the slides shared with the committee, along with the associated FAQ, both included below these minutes.
 - Overall, we are trying to simplify the NIFA budget by reducing the number of lines in the bill allocation ask to a single value, with details on individual lines in the report. The hope is to improve advocacy for NIFA funding lines with a single top-line ask like that of NIH.
 - Discussion ensued on the previous issue about Extension and SNAP-Ed/EFNEP and whether this will continue to be a problem or if SNAP-Ed will be taken over by HHS.
 - How will topline increases trickle down to smaller ones? Trust will be critical. Strong coaching will be needed on how to effectively advocate both for the topline and their smaller ones.
 - With the clarification of language in what would be the one descriptive paragraph, ARD's concern is addressed with Marty's explanation and they are supportive.
 - Next steps: Will be presenting this again during the Thursday ESCOP meeting, then again at the end of March.
6. Infrastructure Update - Caron, Jeff, Alton
- Alton gave a summary of the infrastructure advocacy effort and the update letter sent out to the system on 2/19, indicating that we are moving forward very intentionally and aggressively with the advocacy effort. He emphasized that local efforts should align with national ones to be most effective. All previous correspondence and materials are linked within the letter. A copy of the letter is included with the materials below, as well.
 - Alton, Glenda, and Tom Coon have been meeting nationally with a number of supporting organizations and learned that advocacy for infrastructure must include administration priorities such as climate change and food insecurity to increase success.
 - Topline ask is \$11.5B and is based on the Gordian Report.
 - The team is listening to the system and answering questions that come up in the FAQ. Responses are vetted by the core team and research EDs.
 - Efforts are on point with the original timeline.
 - **Action: Reserve the date for the Rebuild Rural Coalition rollout webinar on March 4 at 11 am ET**, we are partnering with them on infrastructure efforts. They are a great, strong partner which Cornerstone Government Affairs has helped to secure.
 - Caron thanked and acknowledged all the help and efforts from Hunt and Vernie at Cornerstone, indicating that this has indeed been a strong team effort.
 - Team leadership is still looking for a champion for this effort and hoping that directors are making contacts at their state level.
 - There is strong 1890 support for this effort, with directors and CARET reps.
7. APLU Update – Doug Steele
- FFY22 advocacy agenda has been approved.
 - Holding on SRIC until all sections can report back, then will make recommendations.
 - PBD meeting items last Friday:
 - i. Discussed CMC becoming a full standing committee of BAA; will need full BAA approval for that. Per Bylaws, this vote will be a supermajority with 2/3 of eligible voting members needed for passage.

- ii. Advocacy contract bidding process is in discussion. Information will be coming from the PBD.
 - iii. Meeting with NIFA Director Carrie Castille later this week on whether the NIFA external partnership effort will move forward.
8. Cornerstone Report – Hunt
- CARET/AHS meeting next week, be sure to reach out to CARET reps on this on appropriations requests and scheduling meetings with delegates.
 - Waiting on earmark guidance from Congress. Can't wait too long though, so we need to pay attention to individual office request deadlines. A broader Call to Action on this will go out soon.
9. NIFA update – Kate
- No update, but happy to answer questions. No were questions asked by the group.
10. ECOP report – Jon
- ECOP BLC works on concept papers for the ECOP 7 priorities listed in last month's BLC minutes.
 - ECOP Farm Bill nutrition working group was created this week with representation from all regions. Jon will find out more on this effort for the next call.
11. BHS report – Laura
- BHS will meet next week with the full board. Updates will come during March BLC call.
 - Laura will let us know if she learns anything about EFNEP/SNAP-Ed. She has not heard anything about what was previously mentioned earlier in the call regarding SNAP-Ed concerns.
12. ESS Annual Budget and Finance Status (slides included with email call reminder) – Jeff
- Jeff presented the ESS budget slides shared previously with the committee. These are included below.
 - Transferred the \$600,000 ESCOP reserve funds to a conservative TD Wealth investment account back in October. Current value is about \$619,000, as of the latest statement.
 - Overall, ESS budget is on target and doing well.
 - Doug Steele: All APLU 2020 assessments expected to be paid by missing states soon.
13. Prep for Climate Discussion on March BLC Call – Jeff
- Jeff discussed the AES climate survey that went out recently to directors.
 - When this data is summarized and becomes available, this committee will discuss what else is needed and further action items in later BLC calls.
 - Doug Steele: Joined FACA steering committee right before membership closed. The group is addressing the role of climate in solving ag and other world problems. Meeting next week and will be inviting speakers. Doug will reach out to ESS for AES climate leaders/experts for assistance with this effort. We are now part of the overall agenda and it's great to be a part of this organization.
14. Other business, as needed – none.

BLC Horizon Topics

Infrastructure, Capacity Funds Advocacy, BAC/CLP issues, next annual budget, Moon Shot ideas for research, Biden/Harris Administration Team Priorities, Government Affairs engagement, etc.

APLU's UNIFIED REQUEST FOR NIFA FUNDING

America's land-grant universities (LGUs) lead the world-renowned research, education, and Extension that advances agriculture and ensures safe and nutritious food, clean drinking water, sustainable and productive forest resources, climate change adaptation and mitigation, fuel to power the nation, healthy families and communities, national security, fair trade, and supports a prosperous economy. The nationally recognized scientists and educators at LGUs are solving the complex, urgent, and important local, regional, national, and global challenges facing America's farmers, ranchers, businesses, and consumers. Furthermore, America's premiere youth development and education program, 4-H, is integrally tied into our LGUs through Extension.

Financial support comes from a partnership of federal, state, and local governments, and private organizations. The primary federal partner is the National Institute of Food and Agriculture (NIFA), USDA's renowned extramural science agency.

The Association of Public and Land-grant Universities (APLU) seeks an increase in federal funding for NIFA's flagship programs in Fiscal Year 2022. **An 8% increase across seven core priority areas**, with additional emphasis placed on our 1994 land-grant universities programs, will help provide research, education, and extension through the nationwide system of LGUs.

In addition to the requested increase, APLU also supports funding all NIFA lines at no less than FY 2021 levels.

APLU REQUESTS A \$100 MILLION INCREASE FOR THE NATIONAL INSTITUTE OF FOOD AND AGRICULTURE

The National Institute of Food and Agriculture (NIFA) has a longstanding partnership with agricultural colleges and universities, including the land-grant university (LGU) system (state colleges of agriculture (1862s), historically Black colleges and universities (1890 HBCUs), and Tribal Colleges and Universities (1994s)), non-land-grant colleges of agriculture, and Hispanic-serving institutions.

NIFA capacity programs enable the outstanding work of our Cooperative Extension System (CES), State Agricultural Experiment Stations (SAES), 1890s Research and Extension programs, 1994 Tribal Colleges and Universities programs, and McIntire-Stennis Cooperative Forestry Programs. Capacity program funding supports high-priority agricultural research needs, such as plant and animal protection and health, forestry and watersheds, climate change adaptation and mitigation, preservation of our natural resources, a healthy environment, safe and nutritious foods, and soil and water conservation. The Extension System associated with each LGU then shares this information and works with local-leaders and citizens to co-create solutions that enhance their communities, linking academic and research programs to societal needs. Federal funding is matched and highly leveraged at the state and local level, connecting local investment and implementation to the needs of the growers, foresters, ranchers, and communities, of that state or region and beyond.

The pandemic has laid bare gaps and challenges in the American economy with our food, fuel, feed, and fiber systems. With this disruption, the land-grant system has altered the methods and approaches in how students are taught, how the Cooperative Extension System responds and delivers education/outreach throughout communities, and how field, lab and greenhouse research is conducted. Through creativity and flexibility, these critical programs and delivery systems at our land-grant institutions have adjusted and continue to adjust, while navigating a myriad of state and local COVID-related disruptions and restrictions. In the coming year, our institutions will be enhancing economic development and workforce training, providing crucial health and community education, and bolstering research programs to address urgent agriculture, food, and natural resource problems.

In addition to capacity funding, NIFA's flagship competitive program, the Agricultural and Food Research Initiative (AFRI), supports competitively peer-reviewed science and education to address priorities in food, agriculture, and natural resources of national and multistate importance. The national scope of AFRI also complements the local scope and capacity-sustaining purpose of NIFA capacity grants.

Increased investment will ensure American agriculture remains the world's leader and enable America's LGUs to recruit and retain the best and brightest scientists, drive innovation and discovery through research, expand outreach through CES, bolster public-private partnerships, and train and develop the talent needed to meet the growing demands of a diverse and impactful workforce.

Appropriations Bill: Agriculture Agency: National Institute of Food and Agriculture

Program	FY 2022 Requested Amount	Program Description	Authorization	Eligibility	Matching Funds
AFRI (Research and Education Programs)	\$470,000,000	Provides competitively awarded research, Extension, and education grants addressing key issues of national and regional importance to agriculture, forestry, and related topics.	7 U.S.C. 450i(b), (National Agricultural Research, Extension and Teach Policy Act of 1977)	1862, 1890 and 1994 Land-grant institutions; other universities; government agencies; and many others.	Match required in limited circumstances.
Smith-Lever (Extension Activities)	\$340,000,000	Provides capacity funding for Cooperative Extension to deliver research-based programs and resources for communities, businesses, and individuals to meet local needs.	7 U.S.C. 341, (Sections 3(b)-(c) of the Smith-Lever Act of 1914, as amended)	1862 Land-grant Universities in all 50 states, DC, and the U.S. territories.	States are required to provide at least a one-to-one match.
Hatch Act (Research and Education Programs)	\$280,000,000	Provides capacity funding to support the State Agricultural Experiment Station research, enabling them complete applied research to address critical national, multi-state, state, and local problems.	7 U.S.C. 361a (Hatch Act of 1887, as amended)	State Agricultural Experiment Stations established pursuant to the Hatch Act of 1887	States are required to provide at least a one-to-one match.
Evans-Allen (Research and Education Programs)	\$79,000,000	Provides capacity funding to support agricultural research at the 1890 Land-grant Institutions, including Tuskegee University.	7 U.S.C. 3222, (Sec on 1445, Research Act of 1977)	1890 Land-grant Universities and Tuskegee University	States are required to provide at least a one-to-one match, but Secretary may waive.
1890 Extension (Extension Activities)	\$67,000,000	Provides capacity funding to support extension activities at the 1890 Institutions to provide educational opportunities that respond to the changing needs of limited-resource, minorities, and economically disadvantaged clients.	7 U.S.C. 3221, (Sec on 1444, Research Act of 1977)	1890 Land-grant Universities and Tuskegee University (the 1890 Institutions)	States are required to provide at least a one-to-one match.
McIntire-Stennis (Research and Education Programs)	\$39,000,000	Provides funding to support forestry research (which includes forests and related rangelands) at land-grant and other public universities.	16 U.S.C. 582a, et seq. (McIntire-Stennis Cooperative Forestry Research Act of 1962)	Land-grant institutions, including 1890 institutions and other public universities that have a forestry school	States are required to provide at least a one-to-one match.
Extension Services at 1994 Institutions	\$10,000,000	Provides capacity funding to support extension services at 1994 institutions to address special needs, take advantage of important opportunities, and/or demonstrate long-term sustained benefits of extension projects in 1994 land-grant institutions.	7 U.S.C. 343(b)(3) (§ 3(b)(3) of the Smith-Lever Act, as added by § 534(b) of the Equity in Educational Land-Grant Status Act of 1994 (7 U.S.C. 301 note))	Tribal colleges and universities designated as 1994 Land-Grant Institutions under the Educational Land-Grant Status Act of 1994 (7 U.S.C. 301 note.).	There is no matching requirement.
Payments to the 1994 Institutions (Tribal Colleges Education Equity Grants Program)	\$6,000,000	Provides capacity funding to support faculty who develop classes and degree programs that teach science and math to American Indians, focusing on agriculture, natural resources, and human sciences.	7 U.S.C. 301 note (§ 535 of the Equity in Educational Land-Grant Status Act of 1994)	Tribal colleges and universities designated as 1994 Land-Grant Institutions under the Educational Land-Grant Status Act of 1994 (7 U.S.C. 301 note.).	There is no matching requirement.
Research Grants for 1994 Institutions	\$6,000,000	Provides competitively awarded grants to support agricultural research that addresses high-priority concerns for tribal, national, or multistate significance, including investigative and analytical studies in the food and agricultural sciences.	7 U.S.C. 301 note (§ 536 of the Equity in Educational Land-Grant Status Act of 1994)	Tribal colleges and Universities designated as 1994 Land-Grant Institutions under the Educational Land-Grant Status Act of 1994 (7 U.S.C. 301 note.).	There is no matching requirement.

LAND-GRANT FUNDING		
Program	FY 2021 Enacted	FY 2022 PBR
AFRI	\$435,000,000	TBD
Smith-Lever 3(b)-(c)	\$315,000,000	TBD
Hatch Act	\$259,000,000	TBD
Evans-Allen	\$73,000,000	TBD
1890 Extension	\$62,000,000	TBD
McIntire-Stennis	\$36,000,000	TBD
1994 Extension Services	\$8,500,000	TBD
Payments to 1994 Institutions	\$4,500,000	TBD
1994 Research Grants	\$4,000,000	TBD

Want to know more?
 Contact: Hunt Shipman
 (hshipman@cgagroup.com) or
 Jim Richards
 (jrichards@cgagroup.com)
 Phone: 202.448.9500
 or visit LAND-GRANT.ORG



**BAA Strategic Realignment
Implementation Committee**

Meeting PPT links

- [Meeting 1](#) – Review work of committee and outline options
- [Meeting 2](#) – Agree on timeline, review options and seek/gather input
- [Meeting 3](#) – Narrowing on an option and coalition building.
- Meeting 4 – (This ppt) - Review and discuss input, determine approach, and outline memo

Strategic Realignment Implementation Committee

Timeline for consideration and discussion

1. Review work of committee and outline options - October
2. Agree on timeline, review options and seek/gather input - November
3. Review and discuss input, determine approach, and outline memo - December/Jan.
4. Review draft memo and approve approach, sketch advocacy plan - February
5. BAC discusses approach and advocacy sketch - March
6. BAC sends recommendation to PBD with final advocacy plan - March
7. Put advocacy plan into action: Engage NIFA/Administration, champions, stakeholders - March to December

Current Structure - Bill

The following pages are illustrative of the current approach containing details from the FY2020 Ag Appropriations Bill and Report.

The bill language is currently separated into **3 accounts**:

1. Research and Education Activities
2. Extension Activities
3. Integrated Activities

Remember:

- Bill language provides the lump-sum appropriation
- Report language is the detailed instructions that direct spending within the lump-sum amount provided in the bill for specified programs.

Bill Language – 3 Accounts

Research and Education Activities

NATIONAL INSTITUTE OF FOOD AND AGRICULTURE

RESEARCH AND EDUCATION ACTIVITIES

For payments to agricultural experiment stations, for cooperative forestry and other research, for facilities, and for other expenses, \$962,864,000, which shall be for the purposes, and in the amounts, specified in the table titled “National Institute of Food and Agriculture, Research and Education Activities” in the explanatory statement described in section 4 (in the matter preceding division A of this consolidated Act): *Provided*, That funds for research grants for 1994 institutions, education grants for 1890 institutions, capacity building for non-land-grant colleges of agriculture, the agriculture and food research initiative, veterinary medicine loan repayment, multicultural scholars, graduate fellowship and institution challenge grants, and grants management systems shall remain available until expended: *Provided further*, That each institution eligible to receive funds under the Evans-Allen program receives no less than \$1,000,000: *Provided further*, That funds for education grants for Alaska Native and Native Hawaiian-serving institutions be made available to individual eligible institutions or consortia of eligible institutions with funds awarded equally to each of the States of Alaska and Hawaii: *Provided further*, That funds for education grants for 1890 institutions shall be made available to institutions eligible to receive funds under 7 U.S.C. 3221 and 3222: *Provided further*, That not more than 5 percent of the amounts made available by this or any other Act to carry out the Agriculture and Food Research Initiative under 7 U.S.C. 3157 may be retained by the Secretary of Agriculture to pay administrative costs incurred by the Secretary in carrying out that authority.

Extension Activities

EXTENSION ACTIVITIES

For payments to States, the District of Columbia, Puerto Rico, Guam, the Virgin Islands, Micronesia, the Northern Marianas, and American Samoa, \$526,557,000, which shall be for the purposes, and in the amounts, specified in the table titled “National Institute of Food and Agriculture, Extension Activities” in the explanatory statement described in section 4 (in the matter preceding division A of this consolidated Act): *Provided*, That funds for facility improvements at 1890 institutions shall remain available until expended: *Provided further*, That institutions eligible to receive funds under 7 U.S.C. 3221 for cooperative extension receive no less than \$1,000,000: *Provided further*, That funds for cooperative extension under sections 3(b) and (c) of the Smith-Lever Act (7 U.S.C. 343(b) and (c)) and section 208(c) of Public Law 93–471 shall be available for retirement and employees’ compensation costs for extension agents.

Integrated Activities

INTEGRATED ACTIVITIES

For the integrated research, education, and extension grants programs, including necessary administrative expenses, \$38,000,000, which shall be for the purposes, and in the amounts, specified in the table titled “National Institute of Food and Agriculture, Integrated Activities” in the explanatory statement described in section 4 (in the matter preceding division A of this consolidated Act): *Provided*, That funds for the Food and Agriculture Defense Initiative shall remain available until September 30, 2021: *Provided further*, That notwithstanding any other provision of law, indirect costs shall not be charged against any Extension Implementation Program Area grant awarded under the Crop Protection/Pest Management Program (7 U.S.C. 7626).

Report Language – 3 Accounts

Research and Education Activities

NATIONAL INSTITUTE OF FOOD AND AGRICULTURE RESEARCH AND EDUCATION ACTIVITIES

[Dollars in Thousands]

Hatch Act	7 U.S.C. 361a-i	\$259,000
McIntire-Stennis Cooperative Forestry Act	16 U.S.C. 582a through a-7	36,000
Research at 1890 Institutions (Evans-Allen Program)	7 U.S.C. 3222	67,000
Payments to the 1994 Institutions	7 U.S.C. 301 note	4,000
Education Grants for 1890 Institutions	7 U.S.C. 3152(b)	23,009
Scholarships at 1890 Institutions	7 U.S.C. 3222a	5,000
Education Grants for Hispanic-Serving Institutions	7 U.S.C. 3241	11,200
Education Grants for Alaska Native and Native Hawaiian-Serving Institutions	7 U.S.C. 3156	3,194
Research Grants for 1994 Institutions	7 U.S.C. 301 note	3,801
Capacity Building for Non Land-Grant Colleges of Agriculture	7 U.S.C. 3319i	5,000
Grants for Insular Areas	7 U.S.C. 3222b-2, 3362 and 3363	2,000
Agriculture and Food Research Initiative	7 U.S.C. 3157	425,000
Veterinary Medicine Loan Repayment	7 U.S.C. 3151a	8,000
Veterinary Services Grant Program	7 U.S.C. 3151b	3,000
Continuing Animal Health and Disease Research Program	7 U.S.C. 3195	4,000
Supplemental and Alternative Crops	7 U.S.C. 3319d	1,000
Multicultural Scholars, Graduate Fellowship and Institution Challenge Grants	7 U.S.C. 3152(b)	9,000
Secondary and 2-year Post-Secondary Education	7 U.S.C. 3152(j)	900
Aquaculture Centers	7 U.S.C. 3322	5,000
Sustainable Agriculture Research and Education	7 U.S.C. 5811, 5812, 5831, and 5832	37,000
Farm Business Management	7 U.S.C. 5925f	2,000
Sun Grant Program	7 U.S.C. 8114	3,000
Research Equipment Grants	7 U.S.C. 3310a	5,000
Alfalfa and Forage Research Program	7 U.S.C. 5925	3,000
Minor Crop Pest Management (IR-4)	7 U.S.C. 450(c)	11,913
Special Research Grants:	7 U.S.C. 450(c)	
Global Change/UV Monitoring		1,405
Potato Research		2,750
Aquaculture Research		2,000
Total, Special Research Grants		6,155
Necessary Expenses of Research and Education Activities:		
Grants Management System		7,830
Federal Administration—Other Necessary Expenses for Research and Education Activities		11,862
Total, Necessary Expenses		19,692
Total, Research and Education Activities		\$962,864

Extension Activities

NATIONAL INSTITUTE OF FOOD AND AGRICULTURE EXTENSION ACTIVITIES

[Dollars in Thousands]

Smith-Lever, Section 3(b) and (c) programs and Cooperative Extension	7 U.S.C. 343(b) and (c) and 208(c) of P.L. 93-471	\$315,000
Extension Services at 1890 Institutions	7 U.S.C. 3221	57,000
Extension Services at 1994 Institutions	7 U.S.C. 343(b)(3)	8,000
Facility Improvements at 1890 Institutions	7 U.S.C. 3222b	20,500
Renewable Resources Extension Act	16 U.S.C. 1671 et seq	4,060
Rural Health and Safety Education Programs	7 U.S.C. 2662(i)	4,000
Food Animal Residue Avoidance Database Program	7 U.S.C. 7642	2,500
Women and Minorities in STEM Fields	7 U.S.C. 5925	400
Food Safety Outreach Program	7 U.S.C. 7625	8,000
Food & Ag Service Learning	7 U.S.C. 7633	1,000
Farmer Stress Assistance Network	7 U.S.C. 5936	10,000
Smith-Lever, Section 3(d):	7 U.S.C. 343(d)	
Food and Nutrition Education		70,000
Farm Safety and Youth Farm Safety Education Programs		4,610
New Technologies for Agricultural Extension		1,550
Children, Youth, and Families at Risk		8,395
Federally Recognized Tribes Extension Program		3,200
Total, Section 3(d)		87,755
Necessary Expenses of Extension Activities:		
Agriculture in the K-12 Classroom	7 U.S.C. 3152(j)	552
Federal Administration—Other Necessary Expenses for Extension Activities		7,790
Total, Necessary Expenses		8,342
Total, Extension Activities		\$526,557

Integrated Activities

NATIONAL INSTITUTE OF FOOD AND AGRICULTURE INTEGRATED ACTIVITIES

[Dollars in Thousands]

Methyl Bromide Transition Program	7 U.S.C. 7626	\$2,000
Organic Transition Program	7 U.S.C. 7626	6,000
Regional Rural Development Centers	7 U.S.C. 450(c)	2,000
Food and Agriculture Defense Initiative	7 U.S.C. 3351	8,000
Crop Protection/Pest Management Program	7 U.S.C. 7626	20,000
Total, Integrated Activities		\$38,000

The SRIC has discussed several options

- 17 lines
- 6 lines
- 5 lines
- 3 lines

Etc.

NATIONAL INSTITUTE OF FOOD AND AGRICULTURE—RESEARCH, EDUCATION,
EXTENSION and INTEGRATED ACTIVITIES

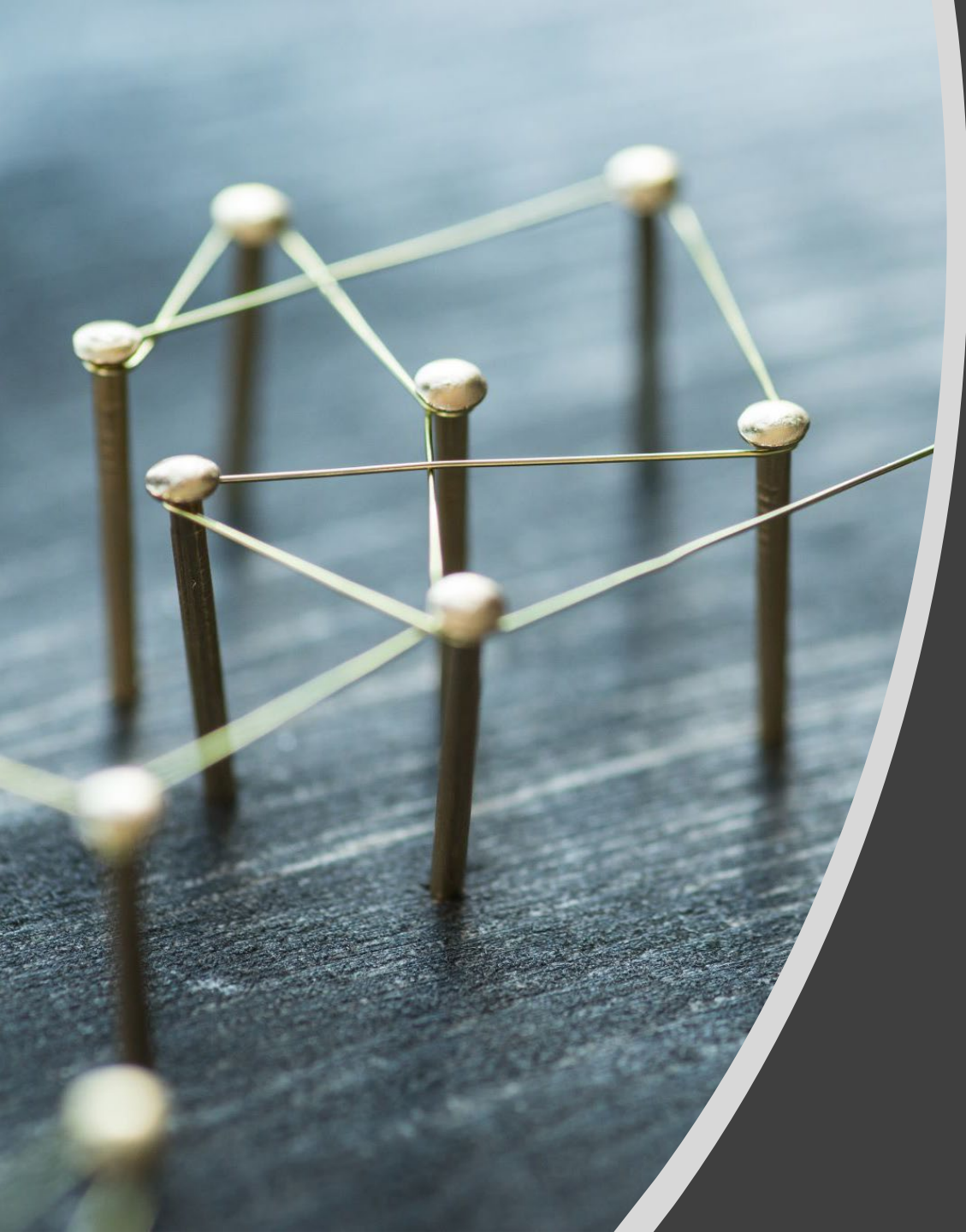
<u>Program/activity</u>	<u>Authorization</u>	<u>Committee Estimate</u>
Extension/Engagement Programs	Smith-Lever Act Section 3(b) and (c) (7 U.S.C. 343(b) and (c) and 208(c) of P.L 93-471), 1890 Extension (7 U.S.C. 3221), 1890 Facility Improvements (7 U.S.C. 3222b), 1994 Extension (7 U.S.C. 343(b)(3)), Smith-Lever 3(d) (7 U.S.C. 343(d)), Food Safety Outreach Program (7 U.S.C. 7625), Renewable Resources Extension Act (16 U.S.C. 1671 et seq.), Rural Health and Safety Education Programs (7 U.S.C. 2662(i)), Food and Ag Service Learning (7 U.S.C. 7633), Farm and Ranch Stress Assistance Network (7 U.S.C. 5936)	\$494,815,000
Research/Discovery Programs	AFRI (7 U.S.C. 3157), Hatch Act (7 U.S.C. 361a-i), Evans-Allen (7 U.S.C. 3222), McIntire-Stennis (16 U.S.C. 582a through a-7), 7 U.S.C. 2152(b), 1994 Research Grants (7 U.S.C. 301 note), Minor Crop Pest Management (IR-4) (7 U.S.C. 450i(e)), Regional Rural Development Centers , Special Research Grants (7 U.S.C. 450i(c)), Alfalfa and Forage Research Program/Women and Minorities in STEM Fields (7 U.S.C. 5925), Supplemental and Alternative Crops (7 U.S.C. 3319d), Food and Agriculture Defense Initiative (7 U.S.C. 3351), Food Animal Residue Avoidance Database Program (7 U.S.C. 7642), Methyl Bromide Transition Program , Organic Transition Program , Crop Protection/Pest Management Program (7 U.S.C. 7626), Aquaculture Centers (7 U.S.C. 3322), Sustainable Agriculture Research and Education (7 U.S.C. 5811, 5812, 5831, and 5832), Sun Grant Program (7 U.S.C. 8114), Farm Business Management (7 U.S.C. 5925f), Research Equipment Grants (7 U.S.C. 3310a)	\$905,769,000
Education/Learning Programs	Scholarships at 1890 Institutions (7 U.S.C. 3222a) Education Grants for Hispanic Serving Institutions (7 U.S.C. 3241), Multicultural Scholars , Graduate Fellowship and Institution Challenge Grants/Education Grants for 1890 Institutions (7 U.S.C. 3152(b)), Capacity Building for Non-Land-Grant Colleges of Agriculture (7 U.S.C. 3319i), Payments to 1994 Institutions (7 U.S.C. 301 note), Education Grants for Alaska Native and native Hawaiian-Serving Institutions (7 U.S.C. 3156), Grants for Insular Areas/Facility Improvements at 1890 Institutions (7 U.S.C. 3222b–2, 3362, and 3363), Veterinary Medicine Loan Repayment/Continuing Animal and Health and Disease Research Program (7 U.S.C. 3151a), Veterinary Services Grant Program (7 U.S.C. 3151b), Secondary and 2-Year Post-Secondary Education/Agriculture in the K-12 Classroom (7 U.S.C. 3152(j))	\$99,535,000
Grants Management Systems		\$7,830,000
Federal Administration		\$19,472,000
Other Necessary Expenses.		
Total, Research, Education, Extension and Integrated Activities		\$1,527,421,000

Based on input...addressing concerns

- Consolidation – The SRIC is not considering the consolidation of any lines.
- Loss of lines – The SRIC is not suggesting elimination of any lines.
- Reorganization of sublines – There was concern that reorganizing lines may confuse congressional staff further.

Goals

- To see increases in all APLU priority lines
- To grow the whole of NIFA
- To be able to coordinate coalition activity



Discussion

The following three pages are illustrative of the strategic realignment committee's proposal using amounts from the FY2020 Ag Appropriations Bill and Report,

- Combine the 3 accounts (Research and Education, Extension, Integrated Activities) into a single paragraph of bill language for NIFA.
- Combine the 3 accounts into a single table for of report language for all Research and Education, Extension, and Integrated Activities.
- Therefore, in theory, allowing for a unified ask along the lines of the successful NIH model i.e. a structure allowing EVERYONE (the BAA, stakeholder, professional societies, etc...) to advocate for a single top-line increase to NIFA while still affording the individual entities the ongoing ability to focus on their more esoteric priorities.

Proposed Bill Language – Single Account for Research and Education, Extension, and Integrated Activities

NATIONAL INSTITUTE OF FOOD AND AGRICULTURE

For payments to agricultural experiment stations, for cooperative forestry and other research, for facilities, States, the District of Columbia, Puerto Rico, Guam, the Virgin Islands, Micronesia, the Northern Marianas, and American Samoa and for other expenses, \$1,527,421,000, which shall be for the purposes, and in the amounts, specified in the table titled “National Institute of Food and Agriculture, Research, Education, Extension and Integrated Activities” in the report accompanying this Act: *Provided*, That funds for research grants for 1994 institutions, education grants for 1890 institutions, capacity building for non-land-grant colleges of agriculture, the agriculture and food research initiative, veterinary medicine loan repayment, multicultural scholars, graduate fellowship and institution challenge grants, and grants management systems shall remain available until expended: *Provided further*, That each institution eligible to receive funds under the Evans-Allen program receives no less than \$1,000,000: *Provided further*, That funds for education grants for Alaska Native and Native Hawaiian serving institutions be made available to individual eligible institutions or consortia of eligible institutions with funds awarded equally to each of the States of Alaska and Hawaii: *Provided further*, That funds for education grants for 1890 institutions shall be made available to institutions eligible to receive funds under 7 U.S.C. 3221 and 3222: *Provided further*, That not more than 5 percent of the amounts made available by this or any other Act to carry out the Agriculture and Food Research Initiative under 7 U.S.C. 450i(b) may be retained by the Secretary of Agriculture to pay administrative costs incurred by the Secretary in carrying out that authority: *Provided further*, That funds for facility improvements at 1890 institutions shall remain available until expended: *Provided further*, That institutions eligible to receive funds under 7 U.S.C. 3221 for cooperative extension receive no less than \$1,000,000: *Provided further*, That funds for cooperative extension under sections 3(b) and (c) of the Smith-Lever Act (7 U.S.C. 343(b) and (c)) and section 208(c) of Public Law 93–471 shall be available for retirement and employees’ compensation costs for extension agents: *Provided further*, That funds for the Food and Agriculture Defense Initiative shall remain available until September 30, 2020: *Provided further*, That notwithstanding any other provision of law, indirect costs shall not be charged against any Extension Implementation Program Area grant awarded under the Crop Protection/Pest Management Program (7 U.S.C. 7626).

Bill Language

- The number (\$1,527,421,000) is the sum of the Research and Education, Extension, and Integrated Activities accounts.
 - Accounts (and all lines) were combined; nothing was eliminated
- The bill would also include language stating that no less than the amount appropriated in the previous fiscal year should be provided.

Proposed Report Language – Single Account for Research and Education, Extension, and Integrated Activities

NATIONAL INSTITUTE OF FOOD AND AGRICULTURE RESEARCH and EDUCATION, EXTENSION and INTEGRATED ACTIVITIES

2019 appropriation	\$1,471,341,000
2020 budget estimate	1,391,686,000
Provided in the bill	1,527,421,000

Comparison:

2019 appropriation	+56,080,000
2020 budget estimate	-135,735,000

COMMITTEE PROVISIONS

For Research and Education, Extension, and Integrated Activities, the Committee provides an appropriation of \$1,527,421,000.....

Table in the Accompanying Report

NATIONAL INSTITUTE OF FOOD AND AGRICULTURE – RESEARCH AND EDUCATION, EXTENSION, AND INTEGRATED ACTIVITIES

Program/Activity	Authorization	Committee recommendation
Agriculture and Food Research Initiative	7 U.S.C. 450i(b)	425,000
Smith-Lever Act, Section 3(b) and (c) and Cooperative Extension ...	7 U.S.C. 343(b) and (c) and 208(c) of Public Law 93–471	315,000
Hatch Act	7 U.S.C. 361a–i	259,000
Food and Nutrition Education	7 U.S.C. 343(d)	70,000
Research at 1890 Institutions (Evans-Allen Program)	7 U.S.C. 3222	67,000
Extension Services at 1890 Institutions	7 U.S.C. 3221	57,000
Sustainable Agriculture Research and Education	7 U.S.C. 5811, 5812, 5831, and 5832	37,000
McIntire-Stennis Cooperative Forestry Act	16 U.S.C. 582a through a–7	36,000
Education Grants for 1890 Institutions	7 U.S.C. 3152(b)	23,009
Facility Improvements at 1890 Institutions	7 U.S.C. 3222b	20,500
Crop Protection/Pest Management	7 U.S.C. 343(d)	20,000
Minor Crop Pest Management (IR–4)	7 U.S.C. 450i(c)	11,913
Education Grants for Hispanic-Serving Institutions	7 U.S.C. 3241	11,200
Farm and Ranch Stress Assistance Network	7 U.S.C. 5936	10,000
Multicultural Scholars, Graduate Fellowship and Institutions Challenge Grants.	7 U.S.C. 3152(b)	9,000
Children, Youth, and Families at Risk	7 U.S.C. 343(d)	8,395
Veterinary Medicine Loan Repayment	7 U.S.C. 3151a	8,000
Extension Services at 1994 Institutions	7 U.S.C. 343(b)(3)	8,000
Food Safety Outreach Program	7 U.S.C. 7625	8,000
Food and Agriculture Defense Initiative	7 U.S.C. 3351	8,000
Organic Transition Program	7 U.S.C. 7626	6,000
Scholarships at 1890 Institutions	7 U.S.C. 3222a	5,000
Capacity Building for Non Land-Grant Colleges of Agriculture	7 U.S.C. 3319i	5,000
Aquaculture Centers	7 U.S.C. 3322	5,000
Research Equipment Grants	7 U.S.C. 3310a	5,000
Farm Safety and Youth Farm Safety Education Programs	7 U.S.C. 343(d)	4,610
Renewable Resources Extension Act.	16 U.S.C. 1671 et seq.	4,060
Payments to the 1994 Institutions	534(a)(1) of Public Law 103–382 ..	4,000
Continuing Animal Health and Disease Research Program	7 U.S.C. 3195	4,000

Table in the Accompanying Report

NATIONAL INSTITUTE OF FOOD AND AGRICULTURE – RESEARCH AND EDUCATION, EXTENSION, AND INTEGRATED ACTIVITIES

Program/Activity	Authorization	Committee recommendation
Continuing Animal Health and Disease Research Program	7 U.S.C. 3195	4,000
Rural Health and Safety Education Programs	7 U.S.C. 2662(i)	4,000
Research Grants for 1994 Institutions	536 of Public Law 103–382	3,801
Federally Recognized Tribes Extension Program	7 U.S.C. 343(d)	3,200
Education Grants for Alaska Native and Native Hawaiian-Serving Institutions...	7 U.S.C. 3156	3,194
Veterinary Services Grant Program	7 U.S.C. 3151b	3,000
Sun Grant Program	7 U.S.C. 8114	3,000
Alfalfa Forage and Research Program	7 U.S.C. 5925	3,000
Potato Research	7 U.S.C. 450i(c)	2,750
Food and Animal Residue Avoidance Database Program	7 U.S.C. 7642	2,500
Grants for Insular Areas	7 U.S.C. 3362 and 3363	2,000
Farm Business Management	7 U.S.C. 5925f	2,000
Aquaculture Research	7 U.S.C. 450i(c)	2,000
Methyl Bromide Transition Program	7 U.S.C. 7626	2,000
Regional Rural Development Centers	7 U.S.C. 450i(c)	2,000
New Technologies for Agricultural Extension	7 U.S.C. 343(d)	1,550
Global Change/UV Monitoring	7 U.S.C. 450i(c)	1,405
Supplemental and Alternative Crops	7 U.S.C. 3319d	1,000
Food and Agriculture Service Learning	7 U.S.C. 7633	1,000
Secondary and 2-year Post-Secondary Education	7 U.S.C. 3152(j)	900
Women and Minorities in STEM Fields	7 U.S.C. 5925	400
Necessary Expenses of Research and Education, Extension, and Integrated Activities:		
Grants Management System	7,830
Agriculture in the K–12 Classroom	552
Federal Administration—Other Necessary Expenses for Research and Education, Extension, and Integrated Activities.	19,652
Total, Necessary Expenses	28,034
Total, Research and Education, Extension, and Integrated Activities	\$1,527,421

Example: Draft One-Pager

- Request: \$xxx million increase for NIFA
- Front: Detail the importance of NIFA and what an \$xxx million in funding would allow NIFA to achieve.
- Back: The back would stay the same – the back still needs to breakdown how we want the increase allocated across the 9 priorities
 - The back of the one-pager provides all the information needed to fill out member appropriations requests.

Questions for Sections, etc.

BAA Strategic Realignment Implementation Committee FAQ

Last updated: February 1, 2021

What is the SRIC's main task?

The SRIC is tasked with the job of identifying NIFA appropriations bill text and report structure that would result in opportunities for more effective APLU Unified Ask advocacy. The anticipated outcome of successfully executing this task is a growth in APLU priority lines via a legislative vehicle that is more receptive to BAA and stakeholder advocacy efforts.

Who is on the SRIC?

You may view a link to the membership [here](#).

What are the challenges that this effort addresses?

- The perception that there is duplication among the NIFA lines.
- The difficulty of coalition advocacy for NIFA.
- Flat funding of NIFA in real dollars.

What congressional and NIFA actions stimulated further work on this issue?

- Consolidated appropriations report language (from the House report) indicated that the committee viewed many of the lines as duplicative.
- In the FY21 President's Budget Request, NIFA proposed having a top-line request for the full agency, rather than the three lines and the associated report tables currently found in the Research and Education, Extension, and Integrated Activities accounts.

What philosophy is driving the APLU BAA strategic realignment project?

The National Institute of Health advocates were successful in securing a doubling of NIH between 1998 and 2005 and, more importantly, substantial growth in tight fiscal environments over the last several years. This success is rooted in the fact that all the groups advocating asked for a top-line increase. The guiding philosophy behind this effort assumes that reorganizing the appropriations lines will allow us to undertake more targeted advocacy to grow the over-all pot of funds.

Why are we concerned?

In real dollars over the last 27 years the NRI-AFRI funding has increased, while real dollar capacity funding has been decreasing. This indicates a substitution issue within the NIFA budget—AFRI competitive grants are increasing at the cost of capacity funding.

How many recommendations has the committee discussed?

We have discussed creating bill language that includes 17 accounts, six accounts, four accounts, and one account (line). See the ppts. The current bill language includes three accounts: Research and Education, Extension, and Integrated Activities. In the current appropriations bill, the programs within these accounts are put into three tables in the report. The suggestion of one account for NIFA bill and report language would simplify the structure and associated ask.

If we choose to adopt one account rather than the current three (and appropriators agree with this proposal), will we lose the ability to advocate for the lines in our Unified Ask?

No.

BAA Strategic Realignment Implementation Committee FAQ

Last updated: February 1, 2021

Does anyone advocate for the individual accounts now?

No. The three accounts were developed because appropriators sought to reduce the number of lines that they had in the bill language (originally there were more than 60 accounts!). There are no coalitions formed around any one of the three accounts at this time.

If we advocate for one account in bill language, what other steps will APLU need to take to ensure that the change is meaningful?

APLU will need to lead a coalition that supports an overall increase to NIFA which includes growth in the APLU Unified Ask lines as well as some room for growth of other programs. This coalition would include APLU BAA members as well as stakeholders beyond our membership community.

Would the APLU Unified Ask leave behind change?

The only change made in the leave behind would be the inclusion of a topline NIFA request. APLU will still advocate for the program lines in the Unified Ask.

When would these changes occur?

The FY22 process is will likely not be impacted by this effort, timing-wise. However, your recommendations will influence our advocacy for FY23 (next year).

What is the next step?

We see your input on the following:

1. Should the BAA SRIC pen a recommendation to the Budget and Advocacy Committee (BAC) that: encourages advocacy for the three accounts to be eliminated and all the underlying authorizations to be appropriated through one account—a NIFA account in the bill language?
2. If you agree that this should be pursued, do you also agree that the lines in the report table be ascending from largest to smallest?
3. Should the BAA SRIC also make a recommendation to the BAC that the BAA pursue the formation of a NIFA coalition which allows us to advocate in coordination with outside stakeholder groups (after we establish our recommended funding requests)?

From: Caron Gala
Sent: Friday, February 19, 2021 9:15 AM
To: Christina Hamilton
Subject: Agricultural Research Infrastructure Advocacy (ARIA) Update



Agricultural Research Infrastructure Advocacy (ARIA) Update

Thursday, February 18th 2021

Dear Experiment Station Section (ESS) Members and Colleagues,

The Agricultural Research Infrastructure Advocacy (ARIA) Advisory group for the Experiment Station Section (ESS) would like to thank the directors and administrators from each of the five regions for your feedback on moving our advocacy efforts forward in a very intentional and inclusive way. We appreciate your concurrent work on and support of the campaign, which is instrumental to our success.

At the national level, the ARIA Advisory group is also conducting meetings with key stakeholders and supporters to socialize the need and ask. Your concurrent efforts to provide information at the local level align strategically with our work at the national level. One is not useful without the other. Ultimately, all politics is local, so your efforts are critical to this effort. Now, the ARIA advisory group is laser focused on securing congressional champions (sponsors) and national support for the request. For example, some combination of the three of us have met with:

- American Farm Bureau Federation
- Science Societies
- Biden-Harris Administration
- Potential congressional champions
- NIFA leadership

As a result of input submitted during this period of socialization, the ARIA Advisory group has put together a [Frequently Asked Questions](#) document. We will continue to update the document over the duration of the campaign. We urge you to send additional questions to ARIA@aplu.org. Once we have a set of champions for the campaign in Congress, we will be able to have more conversations to address the finer details that have arisen by the ESS membership. At the national level, we are also committed to meeting with USDA and other parts of the administration as appointees take office.

We are reaching the fourth phase of the campaign (ARIA Public Campaign and Release of Study). During this phase, we will use the Gordian Study to engage in discussions with

members of Congress and the Biden-Harris Administration. This study will be released during a webinar on March 4th with the Rebuild Rural Infrastructure Coalition. The event will outline the report findings and summarize the infrastructure request publicly. Please reserve this date. We will also send a separate invitation to you after the details are finalized. If you have influencers (supporters) who are willing to provide statements of support for the effort at the national level, please let us know via ARIA@aplu.org.

APLU Public Affairs and Forbes Tate are putting together a communications toolkit that your college communicators and others can use to publicly speak about the report. The toolkit will be made available a week prior to the report release taking place on March 4th.

We deeply appreciate the input of the ESS members throughout this process. This is a once-in-a-lifetime opportunity. We look forward to working with you to make this bold initiative a reality.

Thanks,



Moses Kairo
Experiment Station Section, Chair
Professor and Dean of the School of Agricultural and Natural Sciences, University of Maryland Eastern Shore



Glenda Humiston
ESCOP Budget and Legislative Committee, Chair
University of California System



Tom Coon
Board on Agricultural Assembly Policy Board of Directors, Chair
Vice President of Agricultural Sciences and Natural Resources, Oklahoma State University

Addendum: ESS has assembled an **ARIA Advocacy Toolbox**, located [here](#). It includes a [leave behind](#), [slide deck](#), [talking points](#), and a [timeline](#). A Communications Toolbox will be provided a week before the Gordian final report is released.

APLU, 1307 New York Avenue, NW, Suite 400, Washington, DC 20005-4722

© 2020 Copyright Contact Privacy Policy

This email was sent to christina.hamilton@wisc.edu. If you no longer wish to receive these emails you may [unsubscribe](#) at any time.

ARIA Frequently Asked Questions

Updated February 18, 2021

This request was developed by the APLU Board on Agriculture Assembly Experiment Station Section (APLU BAA). It is an Experiment Station Section-led effort to secure funding for research facilities at land-grant universities and non-land grant colleges of agriculture. The APLU BAA Experiment Station Section is operating under approval from the Policy Board of Directors (PBD). The APLU works via its government affairs effort to achieve PBD objectives.

Request: "We propose that funding for improvements in agricultural research facilities be included in any upcoming the Infrastructure/Stimulus Bill. The request level is \$11.5 billion designated for infrastructure grants awarded over a five-year period. The grants program is authorized under the Research Facilities Act, Section 7503 of the 2018 Farm Bill.*

1. What funding vehicle is ESS (and APLU) aiming to have this request included in?

We are advocating to receive agricultural research infrastructure funding for the land-grant university community through an economic stimulus bill.

2. What is the expected timeline for the request?

The President is developing an infrastructure proposal that his administration will release in anticipation of an economic stimulus bill.

3. What is the ESS membership expected to do?

We are asking the ESS membership to socialize the request with influencers (e.g., Farm Bureau, coalition members, etc.) who can convince members of Congress (champions) to support the infrastructure request during congressional deliberations on the stimulus bill. We encourage you to work closely with your university administration and lobbyist. It is important to identify and cultivate congressional champions to ensure a campaign.

4. What is the amount and duration of the request?

APLU proposes an agriculture facility focused infrastructure grant program funded at \$11.5 billion awarded over a five-year period. The funding may be administered through the National Institute of Food and Agriculture. Agricultural research facilities, particularly LGU facilities, are optimally placed to yield geographically relevant agricultural and natural resource insights at the local, state, and regional levels.

5. How was the request number chosen?

In 2020, Gordian assessed the state of facilities at the colleges or schools of agriculture, reporting that 69% of the buildings are at the end of their useful life. Gordian reports that the cost of upgrading deferred maintenance in 2021 is \$11.5 billion, with a replacement value of \$38.1 billion. The new request level is equal to the estimate of deferred maintenance in the Gordian report.

6. Why is ESS (and APLU) using the Research Facilities Act as the basis for the request?

The Research Facilities Act (Act) is a useful request tool for our efforts. The ESS is basing the proposal on the Act, which was most recently amended and reauthorized in the 2018 Farm bill due to successful ESS advocacy efforts, with additional direction/requirements that the funding provided be available to colleges and schools of agriculture as described in the next FAQ below. The Research Facilities Act authorizes a grant program to assist in the construction, alteration acquisition, modernization, renovation, or remodeling of agricultural research facilities. After we secure champions, provisions that address matching and competitiveness will be considered. The campaign requires a team of champions to move forward.

7. What colleges and schools of agriculture would be eligible for the funding?

Grants are provided to entities eligible to receive funds under a capacity and infrastructure program as defined in [Section 251 \(f\) \(1\) \(C\)](#) (pg. 36/61) of the Department of Agriculture Reorganization Act of 1994. *All APLU BAA land-grant university institutions and non-land grant colleges of agriculture are eligible. This eligibility was defined by the amendment of the Act via the 2018 Farm Bill.*

8. Will you ask for a match waiver?

Yes, we will seek a provision allowing the Secretary waiver authority for matching funds.

ESS FINANCIALS

- **2020 ESS assessments paid (71/77)
and adjustments** **\$ 4,175**
- **ESS Accounts**
 - TD Wealth Investment **\$616,808**
 - Cumulative Cash Reserve **~\$236,850**

(12/31/2020)

ANNUAL ESS BUDGET (CY2020 and CY2021)

CARRYOVER CASH RESERVES (end CY2019)		\$92,277	~\$236,850
INCOME	CY2020 BUDGET	CY2020 ACTUAL	CY2021 BUDGET
ESS Assessment	\$200,000	\$194,574	\$100,000
EXPENSES			
CMC (Forbes Tate CY2020)	\$133,333	\$28,333	tbd
Promotion (Ag on Hill, SoAR, Chair travel)	\$10,000	0	\$10,000
Diversity Catalyst (award, travel)	\$5,000	\$1,000	\$4,000
Training	\$5,000	\$5,000	\$15,000
Meeting Support (Joint COPs, ESS)	\$10,000	\$586	\$10,000
Website	\$2,000	0	\$1,000
National Impact Database (TAMU hosted)	\$12,500	\$12,500	\$12,500
National Impact Database Writing (travel)	\$5,000	\$2,582	\$5,000
NC-FAR Membership	\$1,000	0	\$1,000
Printing (APLU, other)	\$15,000	0	\$10,000
NRSP Stakeholder (travel)	\$1,500	0	\$1,500
NET BALANCE		~\$144,573	~\$30,000 (-tbd)

(12/31/2020)