



Southern IPM Center Update

National IPM Coordinating
Committee Meeting

October 22, 2019



Regulatory Science Network

Wendy Britton

Welcome to the

National IPM Database

Search the Integrated Pest Management database for commodities grown in the United States!

 Search



United States Department of Agriculture
National Institute of Food and Agriculture



Website Managed by the Southern Integrated Pest Management (IPM) Center
2230 Varsity Drive, STE 110, NCSU Centennial Campus, Raleigh, NC 27606

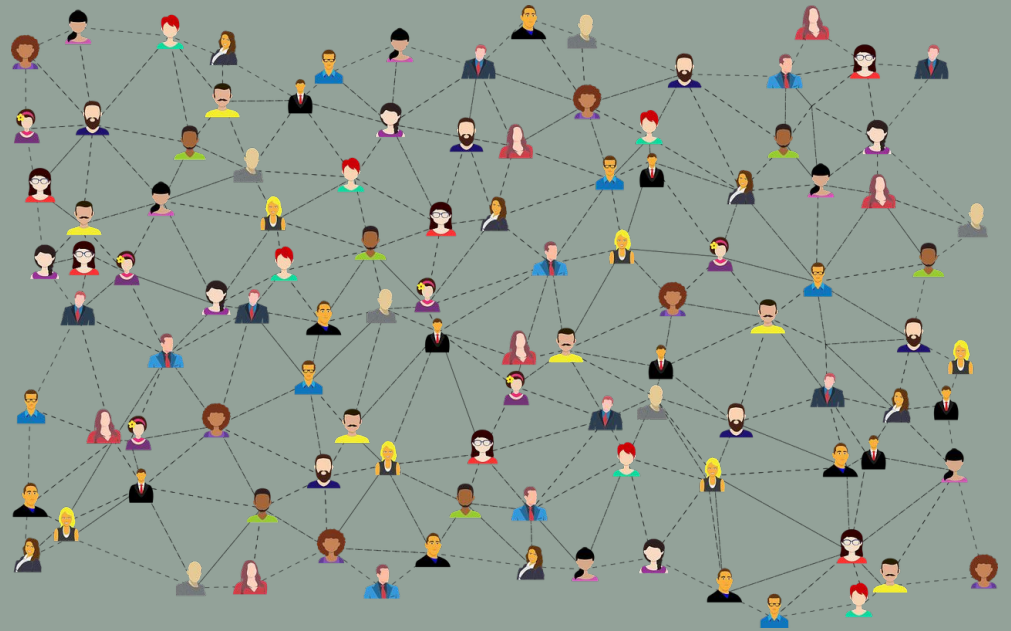
Funding for this project was provided by the National Institute of Food and Agriculture, U.S. Department of Agriculture, under Agreement No. 2014-70006-22485

IPM Data

IPMData.IPMCenters.org

Robin Boudwin

New Website
Newsletters
Videos
Podcast
Webinar Partnering
Social Media
Workshops



Communication

Kayla Pack Watson

The Southern Integrated Pest Management Center

Fostering the development and adoption of IPM in the South

Science-based approaches to managing pests in ways that generate economic, environmental, and human health benefits

SouthernIPM.org

Recently relaunched!



Evaluation

Jean-Jacques Dubois



Invasive Species

Joe LaForest

GOT INVASIVE SPECIES?



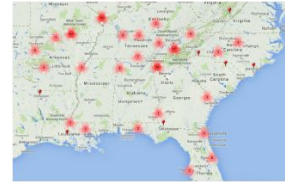
SEEDN

Southeast Early Detection Network

[Home](#) [Report Sightings](#) [Distribution Maps](#) [Species Information](#) [Tools & Training](#) [My EDDMapS](#) [About](#) [sign out](#)

What is the Southeast Early Detection Network (SEEDN)?

The Southeast Early Detection Network (SEEDN) website helps you identify and report invasive plants, insects and plant pathogens in the Southeastern United States. By reporting sightings of invasive plants and other invasive pests, we can better assess the extent of the infestations and hopefully eradicate new infestations before they become huge problems.



Smartphone App

The SEEDN app brings the power of EDDMapS to your smartphone. Now you can submit invasive species observations directly with your smartphone from the field. These reports are uploaded to EDDMapS and e-mailed directly to local and state verifiers for review. Get it Now!

Partners



UNIVERSITY OF
GEORGIA

Southern
IPM
Center

Statistics

1,002,909 County Reports
545,607 Point Reports
2,564 Species

Recent Reports in SEEDN States

- ✓ cogongrass by Alabama Forestry Commission in Perry County, Alabama
- ✓ cotton aphid by Brian Wirt Hayes in Mitchell County, Georgia
- ✓ Corn earworm by Brian Wirt Hayes in Mitchell County, Georgia
- ✓ silverleaf whitefly by Brian Wirt Hayes in Mitchell County, Georgia
- ✓ stink bugs by Brian Wirt Hayes in Mitchell County, Georgia
- ✓ More Reports

Educational Resources

- ✓ EDDMapS: Invasive Plant Mapping Handbook

EDDMapS
find • map • track



HELP US STOP THEM!

2019 EDDMapS Summary

1-1-2019 to 10-18-2019

	All data	Bulk data removed	Southeast without bulk data
Diseases	9	8	7
Insects	38	28	12
Wildlife	120	107	95
Plants	517	516	226
Reports	27,290	25,823	3,759
New County Report	1,523	1,515	437
New State Report	145	142	53

[http://bit.ly/EDDMapS201](http://bit.ly/EDDMapS2019)

ONE DATA SET... MANY SOURCES, VIEWS, AND LOCATIONS


myFields

Home | Pest Profile | About Us | Sign In | Sign Up

Pest Profile

Sugarcane Aphid

Melanaphis sacchari




Management guide

Sugarcane Aphid (Karlson, Sugarcane)
Sugarcane Aphid (Texas Sugarcane)

Pest Description

These are very pale yellow aphids with short, dark 'tailpipes' (cornicles). They are capable of very high rates of reproduction and produce copious amounts of honeydew. The sugarcane aphids seen in 2013 were gray to tan or light yellow. Unlike other common aphid species that feed on sorghum, sugarcane aphids have dark, paired, teliole-like structures, called cornicles, at the rear, and their tarsi (feet) are dark at high magnification. The dark cornicles and tarsi contrast distinctly with the lighter body color of the sugarcane aphid. Go to Texas A&M Agriles Extension Publication (H0305-021) for more information.

Current Information Map: Provided by EDDMapS




Legend

- No Data
- Not Reported

EDDMapS

Sugarcane aphid
Melanaphis sacchari (October, 1997)



Legend

- No Data
- Not Reported


Sorghum: The Golden Grain

SUGARCANE APHID

Based on Apr 1st, 2013 11:43 AM Sugarcane aphid

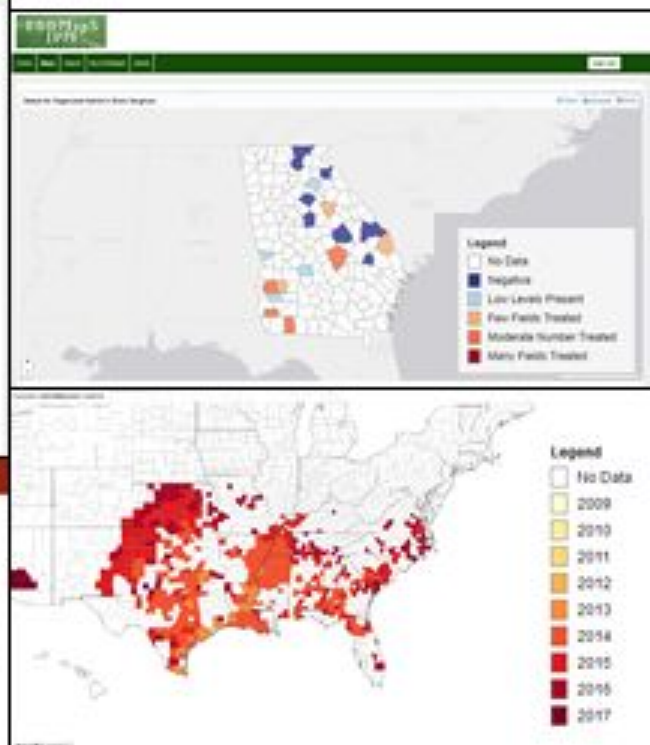
SUGARCANE APHID TRACKER

Based on Apr 1st, 2013 11:43 AM Sugarcane aphid

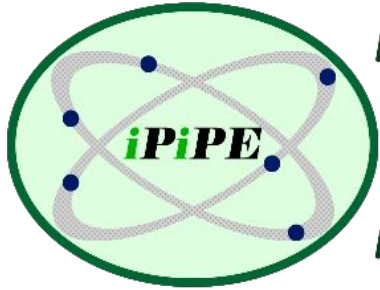


Legend

- No Data
- Not Reported



iPIPE and EDDMapS are merging!



Progress thru Sharing

iPIPE

Progress thru Sharing

Sharing unbiased, science-based tracking and forecasting information about agriculturally important organisms

EDDMapS
find • map • track



A common platform for invasive species and pest data with simple ways to use it

More on this tomorrow



Resistance Management

Joe LaForest

More on this tomorrow



Pollinator Protection

Danesha Seth Carley





Journal of Integrated Pest Management



Get the Latest Research
SIGN UP FOR E-ALERTS

OXFORD
ACADEMIC

Sign In ▼ Register

JOURNAL OF INTEGRATED PEST MANAGEMENT



Issues ▼ Special Collections Submit ▼ Alerts About ▼



About the journal

Journal of Integrated Pest Management is an open access, peer-reviewed, extension journal covering the field of integrated pest management. The journal is multi-disciplinary in scope, publishing articles in all pest management disciplines.

**Altmetric data now
available on all articles.**



Find out more about
how Altmetric is used



Underserved Audiences

Daneshia Seth Carley



Impact of Irma and Maria Hurricanes on PR

- 75%** Lost in Harvest
- 90%** Lost in New Plantation
- 73%** Lost in Plantations in Production
- 44%** Lost in Pruned Plantation

Harvest of 2018 was from pruned trees and pockets of plantations without damage



Challenges

1. Human resources limitations
 - Shortage in qualified pickers for the crop
 - Limited availability of workers during the year











Friends of IPM

Henry Fadamiro

Grant Programs: ~\$300,000 a year in grant funding

- * IPM Enhancement Grants
- * Critical and Emerging Issues
- * IPM Documents (Pest Management Strategic Plans and Crop Profiles)
- * Underserved Audience Grants (focused grant program)

RFA is now OPEN !

Grants

Danesha Seth Carley



Southern IPM Center PD Workshop

Southern Division APS
February 9-11, 2020 at the
Francis Marion Hotel in
Charleston, South Carolina.