

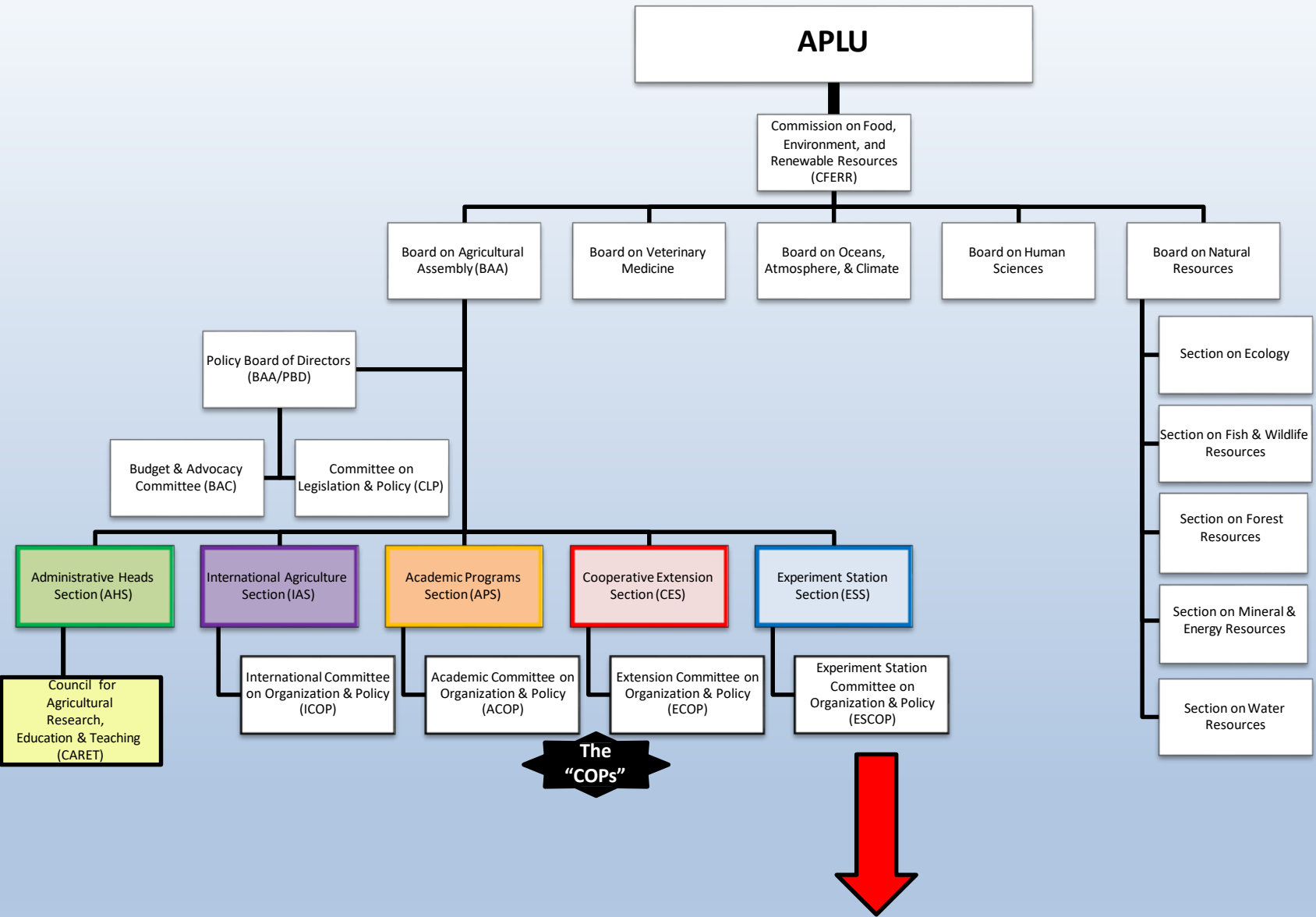
How ESCOP's Science and Technology Committee Interfaces with SSSC

Jeff Jacobsen

Executive Director

**North Central Regional Association Agricultural
Experiment Station Directors (NCRA)**

Executive Vice-Chair SSSC





ESCOP

Executive Committee

Chair's Advisory Committee

Budget & Legislative

Communications & Marketing

Diversity Catalyst Committee

Science & Technology

National IPM Coordinating Committee

Social Sciences Subcommittee

Regional Associations
(ARD, NE, NC, S, W)

Multistate Research Committee or Multistate Advisory Committee (MRC/MAC)

National Multistate Coordinating Committee (NMCC)

Multistate Research Projects
(R, ERA, CC, AC, DC)

National Plant Germplasm Coordinating Committee (NPGCC)

National Research Support Program (NRSP) Review Committee

NRSP1 Management Committee

NIMSS
www.nimss.org

Impact Communications

- ALLIED PROGRAMS**
- Cornerstone Government Affairs
 - National Impact Database (TAMU)
 - Kglobal (Ag is America)

Sciences Subcommittee (SSSC)

Show

About

The Sciences Subcommittee (SSSC) shall function as a subcommittee of the ESCOP Science and Technology Committee. SSSC will make recommendations for specific actions to help the Land-grant system address high priority research and education issues leading to outcomes that address social issues in a significant, measurable way and that will be supported by sustained financial support.

Upcoming Events

[SSSC Meeting 2018](#)

Feb 28, 2018

Show All

Resources

No Resources

Past Events

[SSSC Meeting 2017](#)

Feb

[SSSC Meeting 2016](#)

Feb

[SSSC Meeting 2015](#)

Ma

[SSSC Meeting 2014](#)

Feb

Members

	Committee Position	Affiliation	Email
Mallick	Chair	Agricultural Education	msr@iastate.edu
Doerfert	Past Chair	Agricultural Communications	david.doerfert@ttu.edu
Park	Incoming Chair	Agricultural Education	tdpark@ncsu.edu
Lavine	Chair S&T	WAAESD	lavine@wsu.edu
Baharany	1890 ARD Member	Agricultural Economics	baharany@mytu.tuskegee.edu
Bennett	1890 ARD Member	Human Sciences	nlbennett@umes.edu
Brown	1890 ARD Member	Agricultural Communication	Adell_brown@suagcenter.com
Butler	1890 ARD Member	Human Sciences	doze_butler@subr.edu
Johnson	1890 ARD Member	Agricultural Education	ABJohnson@pvamu.edu
Worthen	1890 ARD Member	Rural Sociology	diw116@hotmail.com
Buck	NC Member	Agricultural Communication	buck.210@osu.edu
Obao	NC Member	Rural Sociology	obao.1@osu.edu
Mrosch	NC Member	Agricultural Leadership	dmrosch@illinois.edu
Shim	NC Member	Human Sciences	sshim7@wisc.edu

SSSC Connections

“make recommendation for specific actions to help the Land-grant system address high priority research and education issues leading to outcomes that deal with social issues in a significant, measurable way and that will generate sustained financial support”

- *Creates a platform for communication and influence from a national perspective to ESCOP and lesser to other Sections*
- *Recognized entity with the research administrator community*
- *SSSC has geography, 1862 and 1890 institutions, unique structure with disciplines*
- *Past work – Science Roadmap, NIFA RFAs and Panels and GAP Analysis, Connectors to multistate technical committees or NRSPs*
- *Presumably, individual, regional and national connections*
- *Go to website <http://escop.info/committee/social-sciences-subcommittee-sssc/> and look at past programs!*
- *ESCOP Science and Technology Committee membership*
- *ESS and LGU priorities and activities highlighted*
 - *Farm Bill, Federal Budgets, APLU Initiatives, NIFA, Impact Statements and Need/Value,and....*

WHAT DO YOU WANT?