



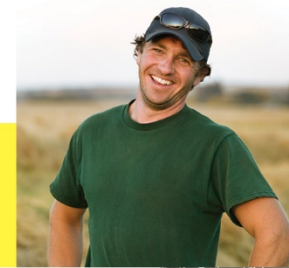
United States
Department of
Agriculture

National Institute
of Food
and Agriculture

www.nifa.usda.gov
[@USDA_NIFA](https://twitter.com/USDA_NIFA)



BIOENERGY, CLIMATE,
AND ENVIRONMENT



FOOD PRODUCTION
AND SUSTAINABILITY



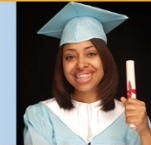
YOUTH, FAMILY,
AND COMMUNITY



FOOD SAFETY
AND NUTRITION



INTERNATIONAL
PROGRAMS



Presentation to ESCOPE Social Sciences Sub-Committee

Wednesday, February 28, 2018

USDA NIFA

NATIONAL INSTITUTE OF FOOD AND AGRICULTURE



United States
Department of
Agriculture

National Institute
of Food
and Agriculture

www.nifa.usda.gov
@USDA_NIFA

NIFA

Aida Balsano

Division of
Family & Consumer Science

Ariela Zycherman

Division of
Community and Education

Toija Riggins

Division of
Family & Consumer Science

Wesley Dean*

Division of
Agricultural Systems

Rachel Melnick*

Division of Global
Climate Change

Robbin Shoemaker*

Division of
Agricultural Systems



United States
Department of
Agriculture

National Institute
of Food
and Agriculture

INVESTING IN SCIENCE | SECURING OUR FUTURE | WWW.NIFA.USDA.GOV

Federal Update

Aida Balsano



United States
Department of
Agriculture

National Institute
of Food
and Agriculture

INVESTING IN SCIENCE | SECURING OUR FUTURE | WWW.NIFA.USDA.GOV

Opportunities for Social Sciences, Arts, and Humanities at USDA-NIFA

Ariela Zycherman



Building the arts, humanities and social sciences at NIFA

- Request for Applications (RFA) language
- New areas for existing programs
- Future directions

We are always looking for partners...



United States
Department of
Agriculture

National Institute
of Food
and Agriculture

INVESTING IN SCIENCE | SECURING OUR FUTURE | WWW.NIFA.USDA.GOV

Competitive Grants



Agriculture and Food Research Initiative Foundational Programs



1. Plant health and production & plant products
2. Animal health and production & animal products
3. Food safety, nutrition, and health
4. Renewable energy, natural resources, and environment
5. Agriculture systems and technology
6. **Agricultural economics and rural communities**
7. Critical agriculture research and extension
8. Exploratory



AFRI Programs of Immediate Relevance

- **AERC – Agricultural Economics & Rural Communities**
 - Economics, Markets and Trade
 - Environmental and Natural Resource Economics
 - Innovation for Rural Entrepreneurs and Communities
 - Small and Medium-Sized Farms
 - Social Implications of Emerging Technologies
- **Sustainable Agricultural Systems**



Example: Innovation for Rural Entrepreneurs & Communities

The Role Of The Arts And Cultural Capital In Rural Innovation And Entrepreneurship: A Research Action Plan

- University of Iowa; conference grant.
- To build on prior NEA funding to bring together relevant scholars, data and methodology experts, and potential funders to develop a literature review, needs assessment, and logic model, as well as a strategic research plan and action steps, including the identification of priority research projects and potential funders.



Other Examples of Competitive Programs

- Sustainable Agriculture Research & Education (SARE)
- Community Food Projects



United States
Department of
Agriculture

National Institute
of Food
and Agriculture

INVESTING IN SCIENCE | SECURING OUR FUTURE | WWW.NIFA.USDA.GOV

North Central SARE- University of Minnesota Extension

- Design thinking for a local and Sustainable Food Future
- 3 community workshops in Minnesota, North Dakota & South Dakota





United States
Department of
Agriculture

National Institute
of Food
and Agriculture

INVESTING IN SCIENCE | SECURING OUR FUTURE | WWW.NIFA.USDA.GOV

Community Food Projects- Farmworkers Association of Florida

- “Rebuilding Local Food Systems in Farmworker Communities Project” (2016-02453)



The new Campesinos' Garden in Apopka includes artwork in surrounding trees. The farmworkers and volunteers who till the soil use only organic fertilizer and pesticides and use drip irrigation to conserve water. (Susan Jacobson / Orlando Sentinel)



United States
Department of
Agriculture

National Institute
of Food
and Agriculture

INVESTING IN SCIENCE | SECURING OUR FUTURE | WWW.NIFA.USDA.GOV

Social Science & Data

Toija Riggins



United States
Department of
Agriculture

National Institute
of Food
and Agriculture

www.nifa.usda.gov
@USDA_NIFA

The logo for the National Institute of Food and Agriculture (NIFA), featuring the letters "NIFA" in a large, white, sans-serif font. The background of the top of the slide is a warm, orange-to-yellow gradient with a silhouette of a mountain range.

Context

- **NIFA-LGU Partnership**
 - Provides science, education, and outreach that citizens need to react to and plan for the changing agricultural environment.
 - To help achieve our mission, we must integrate physical science work with the social, behavioral, and economic sciences to affect meaningful societal change.
- Coordination of social science activities is important because using the full breadth of what the social sciences have to offer will increase the impact of NIFA/LGU investments and improve the creation and communication of our societal value.



United States
Department of
Agriculture

National Institute
of Food
and Agriculture

www.nifa.usda.gov
@USDA_NIFA

The logo for the National Institute of Food and Agriculture (NIFA), featuring the letters "NIFA" in a white, bold, sans-serif font. The background of the top of the slide is a warm, abstract landscape with orange and yellow tones, suggesting a sunset or sunrise over a field.

How?

- Alignment of social science research methods across disciplines.
- ESCOP SSSC can promote economic and societal value of the Land-Grant System's work through use of solid data and methodologies.



United States
Department of
Agriculture

National Institute
of Food
and Agriculture

www.nifa.usda.gov
@USDA_NIFA

The logo for the National Institute of Food and Agriculture (NIFA), featuring the letters "NIFA" in a large, white, sans-serif font. The background of the slide is a warm, orange-to-yellow gradient with a silhouette of a mountain range.

How, cont.

- Performance measurement and evaluation use rigorous social science research methods to explain the societal value of projects, programs, and policies.
- ESCOP SSSC and NIFA can promote more rigorous measurement of performance across the LGU system.



United States
Department of
Agriculture

National Institute
of Food
and Agriculture

www.nifa.usda.gov
[@USDA_NIFA](https://twitter.com/USDA_NIFA)

NIFA

Questions?

Dr. Aida Balsano

National Program Leader

abalsano@nifa.usda.gov

202-702-3346

Dr. Ariela Zycherman

National Program Leader

Ariela.Zycherman@nifa.usda.gov

202-702-0384

Dr. Toija Riggins

National Program Leader

toija.riggins@nifa.usda.gov

202-702-2297