



United States
Department of
Agriculture

National Institute
of Food
and Agriculture

www.nifa.usda.gov
[@USDA_NIFA](https://twitter.com/USDA_NIFA)

NIFA Review and Updates

National IPM Coordinating Committee,
Washington, DC
October 23, 2018

USDA NIFA

NATIONAL INSTITUTE OF FOOD AND AGRICULTURE



United States
Department of
Agriculture

National Institute
of Food
and Agriculture

www.nifa.usda.gov
[@USDA_NIFA](https://twitter.com/USDA_NIFA)

Presenters

Herb Bolton
National Program Leader,
Entomology
hbolton@nifa.usda.gov
202-401-4201

Rubella Goswami
National Program Leader,
Plant Pathology
rubella.goswami@nifa.usda.gov
202-401-0628

USDA NIFA

NATIONAL INSTITUTE OF FOOD AND AGRICULTURE



United States
Department of
Agriculture

National Institute
of Food
and Agriculture

www.nifa.usda.gov
@USDA_NIFA

NIFA

USDA REE and NIFA Leadership Changes

- Acting Director of NIFA



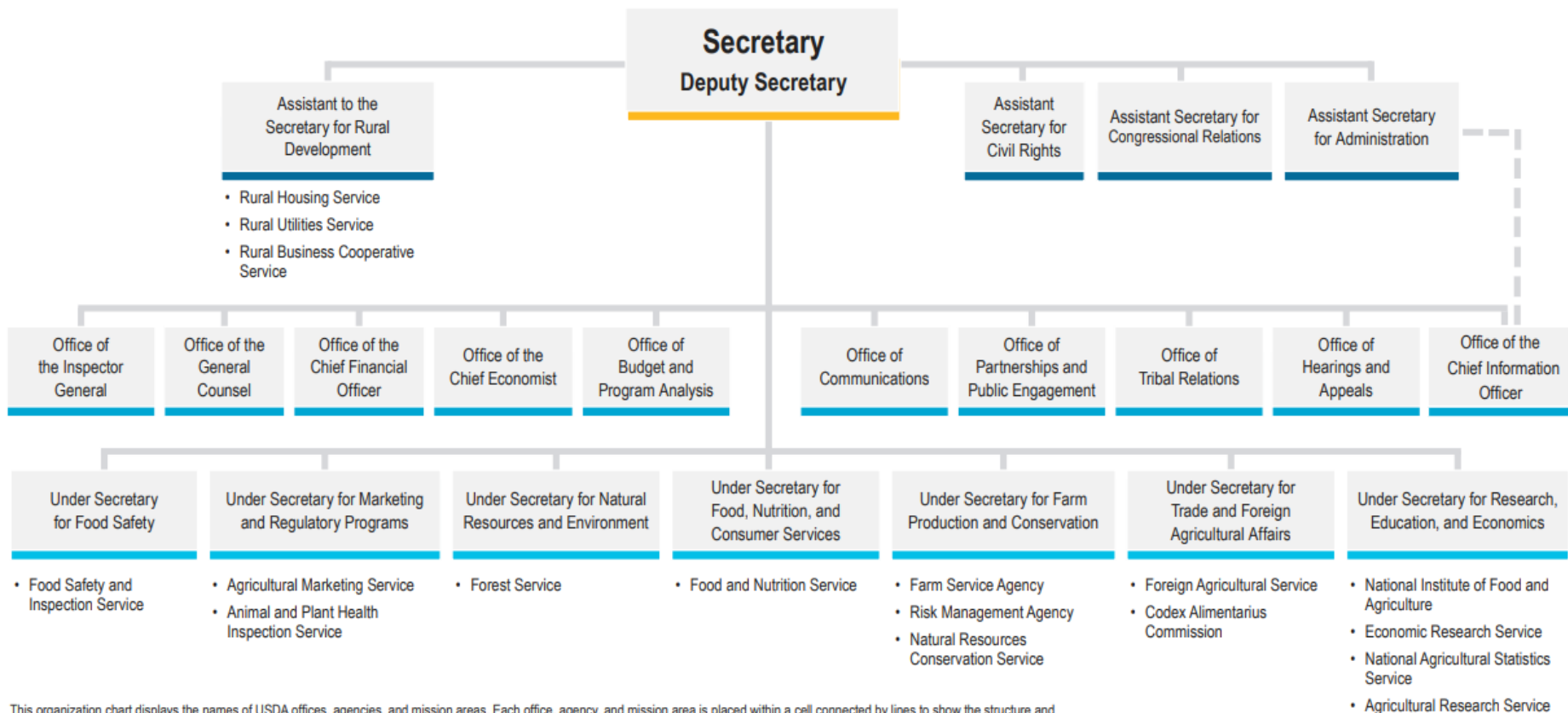
- Thomas Shanower, USDA, ARS

- University of California, Berkeley; received a Ph.D. in Entomology

- He will transition with the new NIFA Director



USDA Organization Chart



This organization chart displays the names of USDA offices, agencies, and mission areas. Each office, agency, and mission area is placed within a cell connected by lines to show the structure and hierarchy (Under Secretary, Deputy Secretary, or Secretary) for which they fall under. An HTML version that lists [USDA Agencies and Offices](#) and [USDA Mission Areas](#) is also available on [usda.gov](#).



United States
Department of
Agriculture

National Institute
of Food
and Agriculture

www.nifa.usda.gov
@USDA_NIFA

NIFA



USDA REE Mission Area

- Dr. Chavonda Jacobs-Young, the Administrator of USDA, ARS has been the Acting REE Mission Area (Research, Education, and Economics) Undersecretary and Chief Scientist for USDA since our previous Undersecretary, Dr. Woteki, departed with the previous administration.
- The Secretary of Agriculture has nominated Dr. Scott Hutchins as the nominee to fill the REE Undersecretary and Chief Scientist positions.
- Senate hearings are not yet scheduled.



Dr. Scott Hutchins

- Dr. Hutchins is the global head of integrated field sciences for Corteva Agriscience -- the new name of the agriculture division of DowDuPont.
- Dr. Hutchins is also an adjunct professor at the University of Nebraska. He previously served as president of the Entomological Society of America, and earned his Ph.D. in entomology from Iowa State University.
- His work focuses on chemical solutions to farm pests.
- He is awaiting confirmation by the Senate.



United States
Department of
Agriculture

National Institute
of Food
and Agriculture

www.nifa.usda.gov
@USDA_NIFA

The logo for the National Institute of Food and Agriculture (NIFA), featuring the letters 'NIFA' in a large, white, sans-serif font against a green background with a stylized mountain range.



New NIFA Director

- J. Scott Angle of Alabama, appointed to be Director of the National Institute of Food and Agriculture, Department of Agriculture, for a term of six years by the Secretary of Agriculture.
- This is an appointed position that is not confirmed by the Senate.
- We expect Dr. Angle at NIFA October 29th.
- B.S. in Agronomy.
- M.S. in Soil Science at the University of Maryland.
- Ph.D. from the University of Missouri with an emphasis on Soil Microbiology.



United States
Department of
Agriculture

National Institute
of Food
and Agriculture

www.nifa.usda.gov
[@USDA_NIFA](https://twitter.com/USDA_NIFA)

The logo for the National Institute of Food and Agriculture (NIFA), featuring the letters "NIFA" in a large, white, sans-serif font against a green background with a stylized mountain range.

New NIFA Director – Dr. Scott Angle

- He worked for 24 years as a professor of soil science and administrator for the Maryland Agricultural Experiment Station and Maryland Cooperative Extension at the University of Maryland.
- His work focused on heavy metals and their interaction with the environment.
- In 2005, he moved to Athens, Georgia, where he served as dean and director of the College of Agricultural and Environmental Sciences at the University of Georgia for 10 years.
- He is a fellow in the American Society of Agronomy and the Soil Science Society of America. He is also a Fulbright Fellow, having worked at the Rothamsted Research Experimental Station in the United Kingdom.
- Most recently, Dr. Angle was the president and CEO of the International Fertilizer Development Center.



United States
Department of
Agriculture

National Institute
of Food
and Agriculture

www.nifa.usda.gov
@USDA_NIFA

The logo for the National Institute of Food and Agriculture (NIFA), featuring the letters "NIFA" in a white, bold, sans-serif font. The background of the logo is a green gradient with a stylized white outline of a mountain range.

NIFA Budget

- Congress passed, and the President approved, a spending bill that included full-year appropriations for a portion of the government and a continuing resolution (CR) for the remainder of the federal government.
- NIFA will operate under the CR until December 7, 2018.
- Most of NIFA's programs will continue as in FY 2018 – the past fiscal year.
- Some Farm Bill funding opportunities are impacted.



United States
Department of
Agriculture

National Institute
of Food
and Agriculture

www.nifa.usda.gov
@USDA_NIFA

The logo for the National Institute of Food and Agriculture (NIFA), featuring the letters "NIFA" in a large, white, sans-serif font against a green background with a stylized mountain range.

Farm Bill

- The Farm Bill expired on September 30.
- The FY 2019 Continuing Resolution allows NIFA to go forward on our discretionary programs in FY 2019, but not our mandatory programs until the Farm Bill is renewed or extended.
- Congress is on recess until after the November elections, so no action is expected until later this year.
- The current goal appears to be to get the Farm Bill out of the conference committee by the end of the calendar year.
- Impacts on USDA programs will become more serious if no action is taken by January 2019.



United States
Department of
Agriculture

National Institute
of Food
and Agriculture

www.nifa.usda.gov
[@USDA_NIFA](https://twitter.com/USDA_NIFA)

The logo for the National Institute of Food and Agriculture (NIFA), consisting of the letters "NIFA" in a white, sans-serif font. The background of the top right of the slide is a green gradient with a faint image of a leaf.

Farm Bill

Mandatory programs not impacted:

- Specialty Crop Research Initiative
- Agriculture Risk Management Education
- Community Food Projects Competitive Grants Program

Mandatory programs impacted include:

- Organic Agriculture Research and Extension Initiative (OREI)
- Beginning Farmers and Ranchers Development Program
- Citrus Disease Research and Extension Program



United States
Department of
Agriculture

National Institute
of Food
and Agriculture

www.nifa.usda.gov
@USDA_NIFA

The logo for the National Institute of Food and Agriculture (NIFA), featuring the letters "NIFA" in a large, white, sans-serif font against a green background with a stylized mountain range.

NIFA Move

The Secretary of Agriculture announced in August 2018 that the Economic Research Service (ERS) and NIFA would be moved out of the National Capital Region. He also announced that ERS would be re-organized with part of ERS going to the Office of Secretary.

Main reasons:

1. To improve our ability to attract and retain highly qualified staff with training and interests in agriculture, many of whom come from our land-grant universities.
 2. To place these important USDA resources closer to many of our stakeholders, most of whom live and work far from the DC area.
 3. To benefit the American taxpayers. There will be significant savings on employment costs and rent, which will allow more employees to be retained in the long run, even in the face of tightening budgets.
- The move is stated to be complete by the end of calendar year 2019.



United States
Department of
Agriculture

National Institute
of Food
and Agriculture

www.nifa.usda.gov
@USDA_NIFA

NIFA

NIFA 2018 Annual Report

- NIFA Communications Staff requested stakeholder input for the NIFA FY 2018 Annual Report.
- Thank you to those who responded.
- Requirements were:
 - 1) short impact statements, less than 100 words.
 - 2) the project's CRIS accession number, NIFA grant number, and/or the name of which NIFA capacity programs (if applicable).
 - 3) 2-3 high-resolution images (file size of 1-8 megabytes) with photo permission to use and modify with caption information.
- Input went directly to Ms. Falita Liles: fliles@nifa.usda.gov .
- Due date was September 14, 2018.
- Expect a similar call and submission date next year.



United States
Department of
Agriculture

National Institute
of Food
and Agriculture

www.nifa.usda.gov
@USDA_NIFA

The logo for the National Institute of Food and Agriculture (NIFA), featuring the letters "NIFA" in a large, white, sans-serif font against a green background with a silhouette of a tree.

NIFA 2018 Annual Report Examples

Silvopasture increases productivity and profitability

- Limited resource farmers and forest landowners face many economic challenges. Researchers at Alabama A&M University developed an integrated research, extension, and outreach program to promote sustainable loblolly-pine/meat goat silvopasture systems. Silvopasture combines forestry with animal grazing to enhance soil management and increase profitability.
- (CRIS # 0227302, AFRI)
- (Attached photographs)



United States
Department of
Agriculture

National Institute
of Food
and Agriculture

www.nifa.usda.gov
@USDA_NIFA

The logo for the National Institute of Food and Agriculture (NIFA), featuring the letters "NIFA" in a large, white, sans-serif font against a green background with a stylized mountain range.

NIFA 2018 Annual Report Examples

Delivering the goods in Fairbanks

- With an average growing season of only 90 days, residents of Fairbanks, Alaska, don't always have ready access to locally grown fresh fruits and vegetables. The Fairbanks Native Association Elders & Youth Community Garden Enterprise created a distribution system to provide these hard-to-get foods to over 500 elders and low-income people in the area. More than a dozen volunteers contributed nearly 500 hours to the project last summer.
- (CRIS # 1010137. Community Food Projects Program)
- (Attached photographs)



New Plan of Work (POW) – First Phase

- NIFA has announced the release of the new POW as an innovative solution for meeting the legislative requirements of AREERA, improve data quality, and lessened reporting burden.
- AREERA = Agricultural Research, Education, & Extension Reform Act
- The AREERA POWs pertain only to Hatch, Smith-Lever 3(b)&(c), Evans-Allen, and 1890 Extension funds.
- The POW Panel of Experts convened on June 16-18, 2015, and was composed of representatives from Land-Grant Universities (LGUs) and the NIFA.
- The Panel produced a set of recommendations to NIFA for streamlining POW reporting.



United States
Department of
Agriculture

National Institute
of Food
and Agriculture

www.nifa.usda.gov
@USDA_NIFA

The NIFA logo, consisting of the letters "NIFA" in a white, bold, sans-serif font, set against a green background with a stylized mountain range silhouette.

New Plan of Work (POW) – New Features

- Streamlined dashboard to manage AREERA reporting;
- Streamlined reporting requirements;
- Reduced data entry;
- The addition of state-defined critical issues that organize and help "tell the story" of how we are working together to advance agricultural research and extension across the nation.
- NIFA is integrating POW into REEport, as one system, beginning with the 2020 Plan of Work.



United States
Department of
Agriculture

National Institute
of Food
and Agriculture

www.nifa.usda.gov
@USDA_NIFA

The logo for the National Institute of Food and Agriculture (NIFA), featuring the letters "NIFA" in a large, white, sans-serif font against a green background with a stylized mountain range.

New Plan of Work (POW) – Resources

- Plan of Work (POW) and REEport Integration. See:
 - <https://nifa.usda.gov/plan-work-pow-and-reeport-integration>
- Frequently Asked Questions. See:
 - <https://nifa.usda.gov/resource/plan-work-pow-and-reeport-integration-frequently-asked-questions-faqs>
- Direct Assistance By Email. Use:
 - InstitutionalProfile@nifa.usda.gov



United States
Department of
Agriculture

National Institute
of Food
and Agriculture

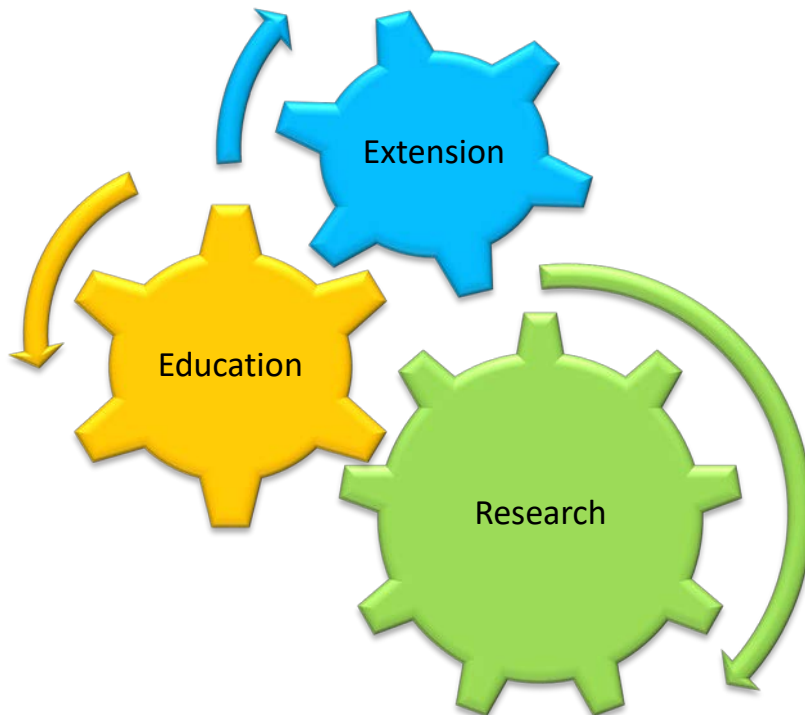
www.nifa.usda.gov
@USDA_NIFA

The logo for the National Institute of Food and Agriculture (NIFA), featuring the letters "NIFA" in a large, white, sans-serif font against a green background with a stylized mountain range.

NIFA Federal Assistance Policy Guide

- NIFA published a revised version of the NIFA Federal Assistance Policy Guide on October 5. The Policy Guide describes the statutory and regulatory responsibilities of funding recipients.
- It incorporates information previously covered in a variety of manuals, and reflects changes that have occurred in the Uniform Guidance, NIFA terms and conditions, NIFA policies and procedures, and stakeholder feedback.
- The policy guide is available on the NIFA website at <https://nifa.usda.gov/resource/nifa-federal-assistance-policy-guide-2018>.

Solving Societal Challenges...



- **Research** - Provide answers to the complex issues facing the nation and world
- **Education** - Strengthen schools and universities to train the next generations
- **Extension** - Provide the knowledge gained through research and education to the agricultural workforce - theory into practice

Discovery through Delivery Continuum

Discovery → Translation → Innovation → Solution



United States
Department of
Agriculture

National Institute
of Food
and Agriculture

www.nifa.usda.gov
@USDA_NIFA

The logo for the National Institute of Food and Agriculture (NIFA), featuring the letters "NIFA" in a large, white, sans-serif font against a green background with a stylized leaf or mountain shape.

NIFA Listens – FY 2019

- NIFA is soliciting stakeholder input on the emerging needs and opportunities in food and agricultural sciences through the “NIFA Listens: Investing in Science to Transform Lives,” initiative.
- We conducted our initial “NIFA Listens” stakeholder input process last year focused on learning the top priorities NIFA should address in agricultural research, extension, and education and which science opportunities to focus on.
- Approximately 8% of comments involved IPM issues/concerns/recommendations.
- The information gathered helped NIFA to prioritize work within and across science emphasis areas, as well as identify gaps in programming.



United States
Department of
Agriculture

National Institute
of Food
and Agriculture

www.nifa.usda.gov
@USDA_NIFA

The logo for the National Institute of Food and Agriculture (NIFA), featuring the letters "NIFA" in a large, white, sans-serif font against a green background with a stylized mountain range.

NIFA Listens – FY 2019

These listening sessions are your opportunity to provide feedback on these questions:

- “In your field, what is the most-needed breakthrough in science/technology that would advance your agricultural enterprise?”
- “When considering all of agriculture, what is the greatest challenge that should be addressed through NIFA’s research, education, and extension?”
- “What is your top priority in food and agricultural research, extension, or education that NIFA should address?”



NIFA Listens – FY 2019

Four regional in-person listening sessions will be held:

- Oct. 11, Hartford, Connecticut (RSVP by Thursday, Oct. 4)
- Oct. 18, New Orleans, Louisiana (RSVP by Thursday, Oct. 11)
- Oct. 25, Minneapolis, Minnesota (RSVP by Thursday, Oct. 18)
- Nov. 1, Albuquerque, New Mexico (RSVP by Wednesday, Oct. 25)
- Also written comments may be provided electronically through the stakeholder input form on the website or emailed by NIFAlistens@nifa.usda.gov (link sends e-mail) until Nov. 30.
- Comments welcome from any individual, group, department, institution, association, etc.
- Further information on the NIFA Listens website:

<https://nifa.usda.gov/nifalistsens>

Natural Resources

- Air
- Forests
- Grasslands and Rangelands
- Soil
- Water

People

- Community Vitality
- Family Well-Being
- Youth

Plants

- Crop Production
- Pest Management
- Plant Breeding
- Plant Health

Advanced Technologies

- Bioenergy
- Biotechnology
- Nanotechnology

Animals

- Animal Breeding
- Animal Health
- Animal Production
- Aquaculture

Business and Economics

- Markets and Trade
- Natural Resource Economics
- Small Business

NIFA supports research, education, & extension activities in partnership with institutions across US (Land-Grant University System, other universities/colleges, government, private, and non-profit organizations)

Types of awards

- Standard (Research, Education, Extension and Integrated)
- Conference
- Coordinated Agricultural Projects
- Food and Agricultural Science Enhancement (FASE)
- Fellowships and other educational opportunities

Programs: National, Interagency & International Collaborations

Food Science

- Food Quality
- Food Safety

Health

- Nutrition
- Obesity
- Wellness

International

- Global Engagement
- Global Food Security

Education

- Minority Serving Institutions
- Teaching and Learning
- Workforce Development

Environment

- Climate Change
- Ecosystems
- Invasive Pests and Diseases

Farming and Ranching

- Agricultural Safety
- Agriculture Technology
- Farmer Education
- Organic Agriculture
- Small and Family Farms



United States
Department of
Agriculture

National Institute
of Food
and Agriculture

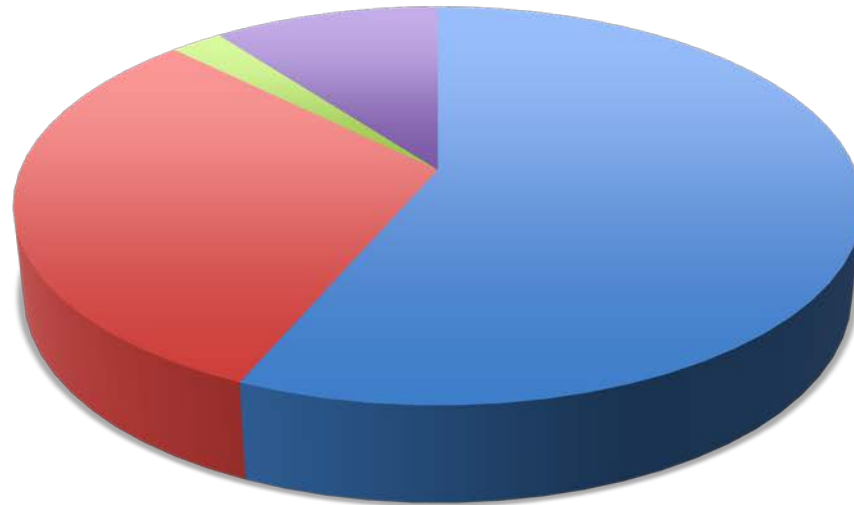
www.nifa.usda.gov
[@USDA_NIFA](https://twitter.com/USDA_NIFA)

NIFA

National Institute of Food and Agriculture

User Inspired Science Transforming Lives

NIFA FY2018
\$1.59B



- Research and Education
- Extension
- Integrated
- Farm Bill Mandatory & Endowment



United States
Department of
Agriculture

National Institute
of Food
and Agriculture

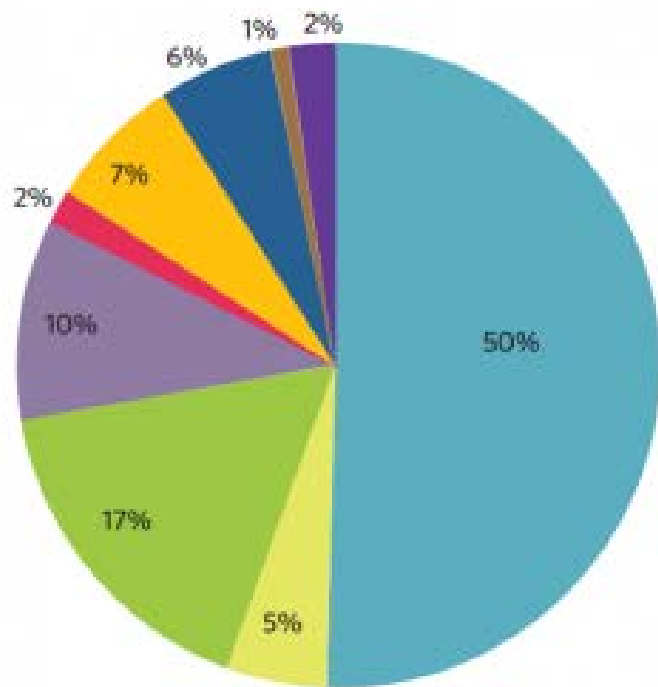
www.nifa.usda.gov
@USDA_NIFA

The logo for the National Institute of Food and Agriculture (NIFA), featuring the letters "NIFA" in a large, white, sans-serif font against a green background with a stylized leaf or mountain shape.

NIFA's Four Science Institutes

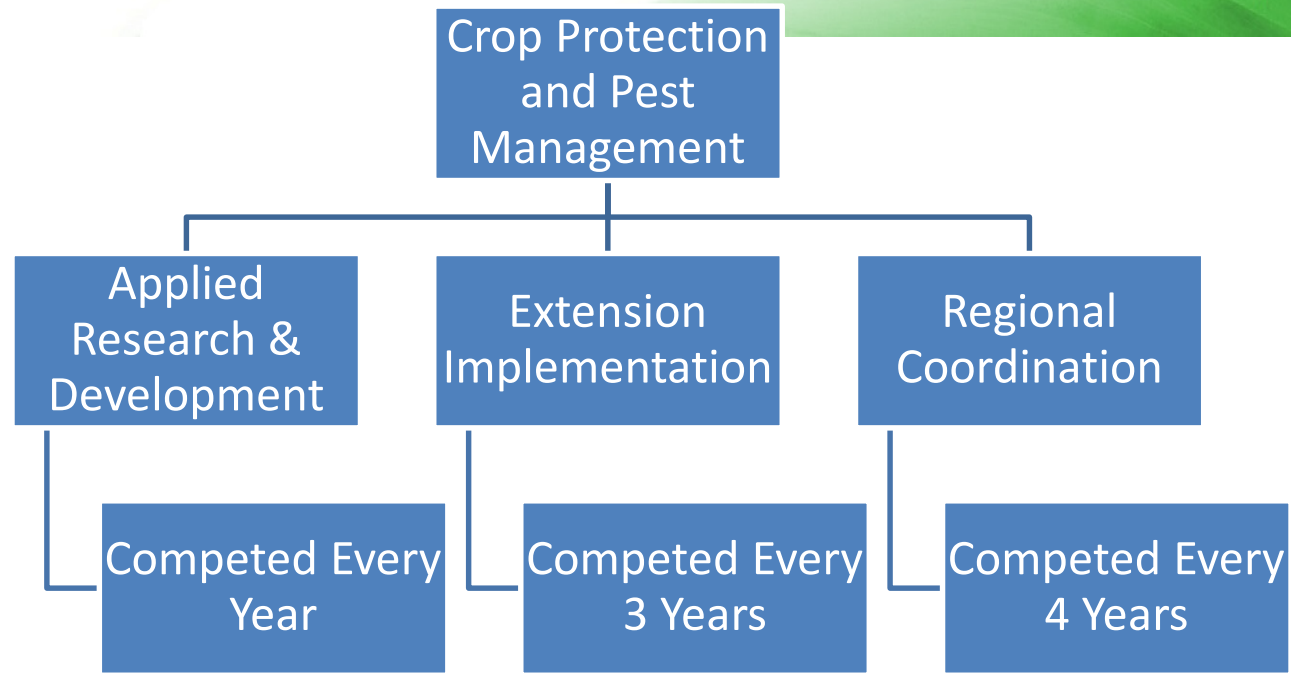
- **Institute of Bioenergy, Climate, and Environment**
 - Enhance sustainable biobased energy systems and products
 - Enhance adaptive agro-ecosystems in response to climate variability and change
- ***Institute of Food Production and Sustainability***
 - Enhance global food security through productive and sustainable agricultural systems
- **Institute of Food Safety and Nutrition**
 - Ensure safe food supply; improve citizens' health through nutrition; reduce childhood obesity; and improve food quality
- **Institute of Youth, Family, and Community**
 - Enable vibrant and resilient communities; enhance youth development
 - Prepare the next generation of scientists
 - Enhance science capacity in minority serving institutions
- **Center for International Programs**

COMPETITIVE FUNDING BY SCIENCE EMPHASIS AREA*



* estimated

- Sustainable Ag Production Systems
- Education & Multicultural Systems
- Environmental Systems
- Family & Consumer Sciences
- Bioeconomy, Bioenergy, Bioproducts
- Human Nutrition
- Food Safety
- Agroclimate Science (Climate Change)
- Youth Development



Focus Areas

Plant Protection Tactics and Tools

Diversified IPM Systems

Enhancing Agricultural Biosecurity

IPM for Sustainable Communities

Development of the Next Generation of IPM Scientists



NIFA FY 2018 Awards - ARDP

- FY 2018 CPPM Applied Research and Development Program Area (ARDP) awards to institutions recommended for ARDP awards have been made.
- CPPM ARDP projects are solicited every year.
- For more details on each project see:

[https://cris.nifa.usda.gov/cgi-bin/starfinder/0?path=fastlink1.txt&id=anon&pass=&search=\(GC=ARDP\)%20AND%20\(IY=2018\)&format=WEBTITLES GIY](https://cris.nifa.usda.gov/cgi-bin/starfinder/0?path=fastlink1.txt&id=anon&pass=&search=(GC=ARDP)%20AND%20(IY=2018)&format=WEBTITLES GIY)

[2019 RFA - We are working this year to get the Crop Protection and Pest Management Program, Applied Research and Development Program Area request for application released in December.](#)



United States
Department of
Agriculture

National Institute
of Food
and Agriculture

www.nifa.usda.gov
@USDA_NIFA

NIFA

NIFA FY 2018 Awards - RCP

- Our Office of Grants and Financial Management (OGFM) is in the process of making Crop Protection and Pest Management Program, Regional Coordination Program Area (CPPM RCP) awards to institutions recommended for IPM Center projects.
- CPPM RCP projects are solicited every four years.
- For more details on each project see:

[https://cris.nifa.usda.gov/cgi-bin/starfinder/0?path=fastlink1.txt&id=anon&pass=&search=\(GC=RCP\)%20AND%20\(IY=2018\)&format=WEBTITLESGIY](https://cris.nifa.usda.gov/cgi-bin/starfinder/0?path=fastlink1.txt&id=anon&pass=&search=(GC=RCP)%20AND%20(IY=2018)&format=WEBTITLESGIY)



United States
Department of
Agriculture

National Institute
of Food
and Agriculture

www.nifa.usda.gov
@USDA_NIFA

NIFA

NIFA FY 2018 Awards – EIP

- Our Office of Grants and Financial Management (OGFM) has made the CPPM Extension Implementation Program Area (EIP) continuation awards to institutions that received their initial CPPM ARDP awards in FY 2017.
- CPPM EIP projects are solicited by NIFA every three years – next in FY2020.



New - National Program Leader
Plant Pathology (Nematology)
Will co-lead the EIP program



United States
Department of
Agriculture

National Institute
of Food
and Agriculture

www.nifa.usda.gov
@USDA_NIFA

NIFA

NIFA Data is Readily available www.nifa.usda.gov



United States Department of Agriculture
National Institute of Food and Agriculture

ABOUT

TOOLS

DATA GATEWAY

BUDGET & LEGISLATION

CONTACT

LANGUAGE



TOPICS

PROGRAMS

GRANTS

NEWSROOM

IMPACTS

RESOURCES



USDA's National Institute of Food and Agriculture Announces
Support for Improved Farm Management

FEATURED INFORMATION



Data Gateway



RFA List



Farm Bill



Careers



Capacity Grants



United States
Department of
Agriculture

National Institute
of Food
and Agriculture

www.nifa.usda.gov
@USDA_NIFA

NIFA

← → https://www.nifa.usda.gov/page/search-grant 🔍 🔒 ↻ Search for a Funding Opport... ×

File Edit View Favorites Tools Help

Search for a Funding Opportunity

Search the NIFA website for all competitive Request for Applications (RFAs).

Filter by keyword Funding Opportunity (FO) number

Catalog of Federal Domestic Assistance (CFDA) number Status

Funding Opportunity Title	Due Date
Agriculture and Food Research Initiative - Water for Food Production Systems Challenge Area	2017-08-02
Agriculture and Food Research Initiative - Food Safety Challenge Area	2017-06-21
Youth Farm Safety Education and Certification Program	2017-05-10
Crop Protection and Pest Management	2017-05-09
Minor Crop Pest Management Program Interregional Research Project #4 (IR-4)	2017-05-01

FILTER BY:

PROGRAM

- Agriculture and Food Research Initiative (AFRI) (20)
- Environmental & Resource Economics Programs (19)
- Aquaculture (14)
- Weed Science (12)
- AFRI Foundational Program (9)

Show more +

ELIGIBILITY

- Other or Additional Information (See below) (87)
- 1890 Land-Grant Institutions (61)
- 1862 Land-Grant Institutions (60)
- 1994 Land-Grant Institutions (56)
- Hispanic-Serving Institutions (47)

Show more +

TOPIC



United States
Department of
Agriculture

National Institute
of Food
and Agriculture

www.nifa.usda.gov
@USDA_NIFA

The logo for the National Institute of Food and Agriculture (NIFA), featuring the letters "NIFA" in a large, white, sans-serif font against a green background with a stylized leaf or mountain shape.

Potential sources of funding

- Agricultural and Food Research Initiative (AFRI)
AFRI now has three major foci & three RFAs:
 - 1) Foundational and Applied Science (modification of foundational RFA with some changes)
 - 2) Sustainable Agricultural Systems (large integrative projects that address major outcomes of agricultural systems)
 - 3) Education and Workforce Development
- Other Competitive Programs (OREI, ORG, SCRI, CDRE, MBT & SBIR)



AFRI Foundational Programs

Goal: Continue building a foundation of knowledge critical for solving current and future societal challenges.

Six priority areas:

1. Plant Health and Production and Plant Products (PHPPP)
2. Animal Health and Production and Animal Products
3. Food Safety, Nutrition, and Health
4. Bioenergy, Natural Resources, and Environment
5. Agriculture Systems and Technology
6. Agriculture Economics and Rural Communities.

Single-function Research Projects & multi-function Integrated Projects



AFRI – Plant Related Programs

Foundational Program RFA:

1. Foundational Knowledge of Agricultural Production : Mathieu Ngouajio, mngouajio@nifa.usda.gov & Robert Nowierski, rnowierski@nifa.usda.gov
 2. **Pests and Beneficial Species in Agricultural Production Systems** ; Mary Purcell-Miramontes, mpurcell@nifa.usda.gov & Rubella Goswami, rubella.Goswami@nifa.usda.gov
 3. Physiology of Agricultural Plants; Liang-Shiou Lin, [llin@nifa.usda.gov](mailto:lilin@nifa.usda.gov) & Shing Kwok, skwok@nifa.usda.gov
 4. Plant Breeding for Agricultural Production; Ed Kaleikau, ekaleikau@nifa.usda.gov & Liang-Shiou Lin, [llin@nifa.usda.gov](mailto:lilin@nifa.usda.gov)
 5. Pollinator Health: Research and Applications; Mary Purcell-Miramontes, mpurcell@nifa.usda.gov
 6. Agricultural Microbiomes in Plant Systems and Natural Resources; Rachel Melnick, rmelnick@nifa.usda.gov& Ann Lichens-Park, apark@nifa.usda.gov; LOI needed
 7. **Critical Agricultural Research and Extension (CARE)**; Wesley Dean wesley.dean@nifa.usda.gov & Charlotte Kirk Baer, cbaer@nifa.usda.gov
 8. **Exploratory Research Program**; Charlotte Kirk Baer, cbaer@nifa.usda.gov & Liang-Shiou Lin, [llin@nifa.usda.gov](mailto:lilin@nifa.usda.gov) ; No deadline on Letter of Intent (LOI) submission Applications must be submitted 60 days after LOI acceptance.
- *Separate RFA with NSF: Plant Biotic Interactions*; Ann Lichens-Park, apark@nifa.usda.gov



Agriculture and Food Research Initiative (AFRI)

<http://nifa.usda.gov/funding/rfas/afri.html>

- 1) **AFRI Foundational & Applied Science Program**
 - **Foundational Knowledge of Agricultural Production Systems**
Contacts: Mathieu Ngouajio, mngouajio@nifa.usda.gov & Robert Nowierski, rnowierski@nifa.usda.gov
 Application deadline: August 9, 2018
 - **Pests and Beneficial Species in Agricultural Production Systems**
Contacts: Mary Purcell-Miramontes, mpurcell@nifa.usda.gov & Rubella Goswami, Rubella.Goswami@nifa.usda.gov
 Application deadline: August 14, 2018
 - **Physiology of Agricultural Plants**
Contacts: Liang-Shiou Lin, llin@nifa.usda.gov & Shing Kwok, skwok@nifa.usda.gov
 Application deadline: July 25, 2018
 - **Plant Breeding for Agricultural Production**
Contacts: Ed Kaleikau, ekaleikau@nifa.usda.gov & Liang-Shiou Lin, llin@nifa.usda.gov
 Application deadline: July 25, 2018
 - **Pollinator Health: Research and Applications**
Contact: Mary Purcell-Miramontes, mpurcell@nifa.usda.gov
 Application deadline: September 6, 2018
 - **Agricultural Microbiomes in Plant Systems and Natural Resources**
Contact: Rachel Melnick, rmelnick@nifa.usda.gov & Ari Lichens-Park, apark@nifa.usda.gov
 Letter of Intent deadline: July 18, 2018
 Application deadline: September 26, 2018
 - **Agricultural Biosecurity Coordination Network**
Contact: Rubella Goswami, rubella.goswami@nifa.usda.gov & Peter Johnson, pjohnson@nifa.usda.gov
 Letter of Intent deadline: July 24, 2018
 Proposal deadline: September 27, 2018
 - **Critical Agricultural Research and Extension (CARE)**
Contacts: James Dobrowolski, jdobrowolski@nifa.usda.gov & Charlotte Kirk Baer, cbaer@nifa.usda.gov
 Letter of Intent deadline: July 25, 2018
 Application deadline: October 22, 2018
 - **Exploratory Research Program**
Contacts: Melvin Carter, melvin.carter@nifa.usda.gov & Liang-Shiou Lin, llin@nifa.usda.gov
 No deadline on Letter of Intent (LOI) submission
 Applications must be submitted 60 days after LOI acceptance.
- 2) **AFRI Education and Workforce Development Programs**
 - **Professional Development for Secondary School Teachers and Educational Professionals**
Contact: Victoria LeBeaux, victoria.s.lebeaux@nifa.usda.gov
 Application deadline: July 11, 2018
 - **Research and Extension Experiences for Undergraduates**
Contact: Ariela Zycherman, Ariela.Zycherman@nifa.usda.gov
 Application deadline: June 28, 2018
 - **NIFA Pre-doctoral & Post-Doctoral Fellowships**
Contact: Roy Ali, rali@nifa.usda.gov
 Application deadline: July 19, 2018
- 3) **AFRI Sustainable Agricultural Systems**
Contacts: Mathieu Ngouajio, mngouajio@nifa.usda.gov
 Application deadline: October 10, 2018

AFRI Interagency Programs

<http://nifa.usda.gov/funding/rfas/afri.html>

- 4) **Early Concept Grants for Exploratory Research -NSF-USDA-BISRC Joint Funding Opportunity**
Contact: Ed Kaleikau, ekaleikau@nifa.usda.gov
 Two-page summary deadline: March 14, 2018
- 5) **Plant Feedstock Genomics for Bioenergy (with DOE)**
Contact: William Goldner, wgoldner@nifa.usda.gov
 Pre-application deadline: February 9, 2018
 Application deadline: April 20, 2018

Other Competitive Programs

https://nifa.usda.gov/search/type/grant?keyword=RFA&sort_by=search_api_relevance

- 1) **Specialty Crop Research Initiative**
Contact: Tom Bewick, tbewick@nifa.usda.gov
 Pre-Application deadline: December 8, 2017
- 2) **Specialty Crop Research Initiative - Citrus Disease (IILB) - Research and Extension**
Contact: Tom Bewick, tbewick@nifa.usda.gov
 Pre-Application deadline (First RFA Call): May 12, 2017
 Pre-Application deadline (Second RFA Call): November 3, 2017
 Full Application deadline (First Invited Calls): August 18, 2017
 Full Application deadline (Second Invited Calls): January 31, 2018
- 3) **Small Business Innovation Research (SBIR) - 10 research areas; 2 phases**
 Plant Related Research areas:
 - Forests and Related resources
 - Plant Production and Protection—Biology
 - Plant Production and Protection—Engineering
 - Biofuels and Biobased Products*Contact: Scott Dockum, sdockum@nifa.usda.gov*
 Phase I RFA is typically released in July of each year with an early October deadline
- 4) **Biotechnology Risk Assessment Grants Program (BRAG)**
Contact: Shing Kwok, skwok@nifa.usda.gov
 LOI Deadline: December 21, 2017
 Application deadline: February 22, 2018
- 5) **Supplemental and Alternative Crops (SACC) Program; Potat Breeding Research Program; Alfalfa and Forage Research Program**
Program Contact: Ann Marie Thro, athro@nifa.usda.gov
 Application deadline: April 18, 2018 (SACC); April 18, 2018 (Alfalfa); Potato is biannual, next RFA will be in spring of 2019.
- 6) **Crop Protection and Pest Management Program**
 - Regional Coordination Area (RCP)
 - Extension Implementation Area (EIP)
 - Applied Research and Development Area (ARDP)*Contacts: Herbert Bolton, hbolton@nifa.usda.gov & Rubella Goswami, Rubella.Goswami@nifa.usda.gov*
 Application deadline: May 8, 2018
- 7) **Methyl Bromide Transition (MBT) Program**
Contact: Herb Bolton, hbolton@nifa.usda.gov
 Application Deadline: January 30, 2018
- 8) **Organic Agriculture Research and Extension Initiative (OREI) and Organic Transitions Program (ORG)** *Contacts: Mathieu Ngouajio, mngouajio@nifa.usda.gov & Steve Smith, ssmith@nifa.usda.gov*
 Application deadline: March 1, 2018 (OREI)
 Application deadline: March 29, 2018 (ORG)



United States
Department of
Agriculture

National Institute
of Food
and Agriculture

www.nifa.usda.gov
@USDA_NIFA

The logo for the National Institute of Food and Agriculture (NIFA), featuring the letters "NIFA" in a large, white, sans-serif font against a green background with a stylized mountain range.

Sustainable Agricultural Systems

- New RFA for 2018 in the Agricultural and Food Research Initiative
- Progression of the Challenge Areas to new multi-disciplinary systems-level work
- *Funding for large integrative projects that address major challenges in agricultural systems*
- SAS is soliciting creative and visionary project applications that:
 - use transdisciplinary approaches
 - integrate research, education, and extension activities
 - promote convergence of science and technology
 - solve present and future food and agricultural production system challenges
 - result in societal benefits.
- Coordinated Agricultural Projects and Strengthening CAP Grants



United States
Department of
Agriculture

National Institute
of Food
and Agriculture

www.nifa.usda.gov
@USDA_NIFA

The logo for the National Institute of Food and Agriculture (NIFA), featuring the letters "NIFA" in a white, bold, sans-serif font against a green background with a stylized landscape.

Sustainable Agricultural Systems

- Up to \$10 million per systems-level Coordinated Agricultural Project (CAP) or FASE Strengthening CAP with project periods of up to five years. (FASE – Food and Agricultural Science Enhancement)
- \$80 million in funding available
- Integrated Projects only (must include all three: Research, Education, and Extension)
- Letter of Intent deadline: Wednesday, June 27, 2018 at 5pm Eastern Time
 - **LOI is required**
- Application deadline: Wednesday, October 10, 2018 at 5pm Eastern Time

nifa.usda.gov/program/afri-sas



Sustainable Agricultural Systems

- Applications must address one or more 25-year goals:
 - Increase agricultural total factor productivity growth from the current 1.5 percent to 2 percent per year and agricultural production by 2 percent annually in all U.S. regions, providing models for similar agro-ecological niches;
 - Improve water and nitrogen and phosphorus nutrient use efficiency by 50 percent;
 - Reduce crop losses due to environmental stress and pests, or diseases by 20 percent;
 - Produce 50 billion gallons of biofuels and 50 billion pounds of biobased chemicals and bioproducts; and
 - Reduce food-borne illnesses down to 8.5 cases per 100,000.



United States
Department of
Agriculture

National Institute
of Food
and Agriculture

www.nifa.usda.gov
@USDA_NIFA

The logo for the National Institute of Food and Agriculture (NIFA), featuring the letters "NIFA" in a large, white, sans-serif font against a green background with a stylized mountain range.

FY 2018 AFRI Education and Workforce RFA

Development Program Request for Applications - 4 Programs

- Professional Development for Secondary School Teachers and Educational Professionals ; *Victoria LeBeaux, victoria.s.lebeaux@nifa.usda.gov*
- Research and Extension Experiences for Undergraduates; *Ariela Zycherman Ariela.Zycherman@nifa.usda.gov*
- NIFA Pre-doctoral Fellowships; *Ray Ali, rali@nifa.usda.gov*
- NIFA Post-doctoral Fellowships; *Ray Ali, rali@nifa.usda.gov*



Non-AFRI Competitive Programs

- **Crop Protection and Pest Management Program**
 - Applied Research and Development Program
 - Extension Implementation (Next competition 2020)
 - Regional IPM Centers
- **Organic Agriculture Research and Extension Initiative (OREI)**
- **Organic Transitions Program (ORG)**
- **Methyl Bromide Transitions (MBT)**
- **Specialty Crop Research Initiative (SCRI)**
- **Specialty Crop Research Initiative - Citrus Disease (HLB) - Research and Extension (CDRE)**
- **Small Business Innovation Research (SBIR)**

Other sources of Funding:

- Sustainable Agriculture Research and Extension (SARE)
- Regional IPM Centers



NIFA FY 2018 Awards - MBT

- NIFA Communications recently announced the FY 2018 Methyl Bromide Transition (MBT) awards.
- The MBT program made four awards on improving the management of major pests impacting U.S. watermelon production (GA), tomato production (NC), the country ham industry (KS), and the wood products industry (PA).
- These are integrated multi-tactic research and extension projects for commodities for which methyl bromide is no longer available.
- MBT projects are solicited each year; success rate this year 33%.
- For more details see: [https://cris.nifa.usda.gov/cgi-bin/starfinder/0?path=fastlink1.txt&id=anon&pass=&search=\(GC=112.C\)%20AND%20\(IY=2018\)&format=WEBTITLES GIY](https://cris.nifa.usda.gov/cgi-bin/starfinder/0?path=fastlink1.txt&id=anon&pass=&search=(GC=112.C)%20AND%20(IY=2018)&format=WEBTITLES GIY)
- 2019 RFA - We are working this year to get the Methyl Bromide Transition Program request for application released in November.



United States
Department of
Agriculture

National Institute
of Food
and Agriculture

www.nifa.usda.gov
[@USDA_NIFA](https://twitter.com/USDA_NIFA)

The NIFA logo, consisting of the letters "NIFA" in a white, sans-serif font, set against a green background with a stylized mountain range silhouette.

NIFA

Small Business Innovation Research (SBIR)

10 research areas; Phase 1 & 2

Plant Related Research areas:

- Forests and Related resources
- Plant Production and Protection—Biology
- Plant Production and Protection—Engineering
- Biofuels and Biobased Products

Contact: Scott Dockum, sdockum@nifa.usda.gov

- Phase I RFA is typically released in July of each year with an early
- October deadline



United States
Department of
Agriculture

National Institute
of Food
and Agriculture

www.nifa.usda.gov
@USDA_NIFA

The logo for the National Institute of Food and Agriculture (NIFA), featuring the letters "NIFA" in a large, white, sans-serif font against a green background with a stylized mountain range.

Sources of information

- Previously funded award data
 - Data Gateway <https://nifa.usda.gov/data>
 - CRIS/REEport <https://portal.nifa.usda.gov>
- Review process description
 - <https://nifa.usda.gov/sites/default/files/resource/NIFA-Peer-Review-Process-for-Competitive-Grant-Applications.pdf>
- Subscribe to NIFA news for alerts
 - <https://nifa.usda.gov/newsroom>



United States
Department of
Agriculture

National Institute
of Food
and Agriculture

www.nifa.usda.gov
[@USDA_NIFA](https://twitter.com/USDA_NIFA)

NIFA

Questions?

